

# Industrial brushes Catalogue



**RSA**

The Power of Perfection



# Content

Wheel brushes	Page
Crimped	08
RASALON	10
Plastic bonded	11
Knotted (pipeline as well as weld cleaning brushes)	12
Swarf removing brushes	14

Cup brushes	
Crimped	18
RASALON	19
Knotted	20

Bevel brushes	
Knotted	24
Crimped	25

Shanked brushes	
End brushes	28
Cup brushes	31
Wheel brushes	32

Internal brushes	
RASALON	38
Special wire	39
Micro abrasive	40
Internal brush with 'O' Ring	41
Cylindrical tube brush	42
Sibot internal brushes	43
Honing brushes	44

Brushes for deburring machines	
RASAMAX MONO / DUO	48
RASA MONO / DUO	51
TURNAMAT	52
RASAMAT	53
RASAPLAN	54

Brushes with special dimensions	
Inquiry forms	59

# High performance brushes from a system manufacturer.

Through intensive research and development RSA have further extended conventional technical brushes by using special types of wire for various applications. For our customers this means excellent processing results, consistent quality and a longer tool working life. The result: low costs per processed workpiece.



## The advantages

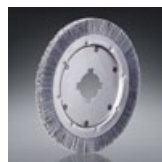
- ∴ Quality filaments with long working life
- ∴ Very short processing times
- ∴ True running throughout the lifetime of the brush
- ∴ Trimming of the brushes according to specific requirements
- ∴ High wire density
- ∴ Secure fitting for high peripheral speeds
- ∴ Continuous cutting performance for consistent quality

### Our brush types

Our brushes are designed for all current industrial standards in both stationary and mobile drives. RSA offers an extensive standard product catalogue as well as customized developments on demand.

#### Wheel brushes

Versatility and efficiency, ideal for various manufacturing processes



#### Brushes for deburring machines

for RSA and all other brand systems



#### Cup and bevel brushes

for surface cleaning



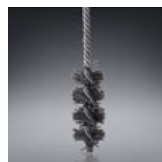
#### Shanked brushes

as wheel, end or cup brush



#### Internal brushes

for the treatment of bores, O-ring grooves, threads and nozzles

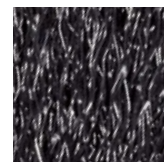


### Materials

RSA brushes are available in a wide range of materials, e.g. RSA special wire for the processing of steel, stainless steel wire for stainless steel workpieces, RASALON nylon for non-ferrous metals as well as plastic bonded brushes.

#### Crimped

out of steel or stainless steel wire: standard quality or RSA special wire



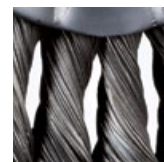
#### Corded

out of stainless steel or brass coated steel wire



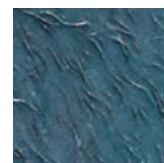
#### Straight, knotted

out of steel or stainless steel wire



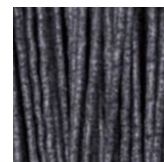
#### Plastic bonded

crimped, out of steel or stainless steel wire



#### RASALON

special abrasive nylon with different grit sizes out of aluminium oxide or silicon carbide



# Examples of application

## Our brushes: from soft to aggressive

Technical brushes from RSA are available for all industrial sectors and all applications. Whether soft for the removal of mould from a cheese loaf or aggressive for the processing of metal. Whatever your application may be - we have the appropriate brush or can develop it for you.

### Processing of weld seams ① ②

Accurate preparation of the weld seam is essential for best results. The parts to be welded must be free from any contamination such as lacquer, paint residues, oxide films, etc. By using brushes, perfect cleaning of the weld seams is possible without removing too much of the weld material which is inevitable when using grinding wheels.

### Cleaning and deburring ③ ④ ⑤

For the cleaning and deburring of gears, bores, blind holes, internal threads, O-ring grooves, grooves as well as end faces on tubes and sections etc., RSA offers a large variety of brushes according to your specific requirements. The result are properly rounded edges without secondary burr and without removing material.





# Wheel brushes



MAX RPM  
13500

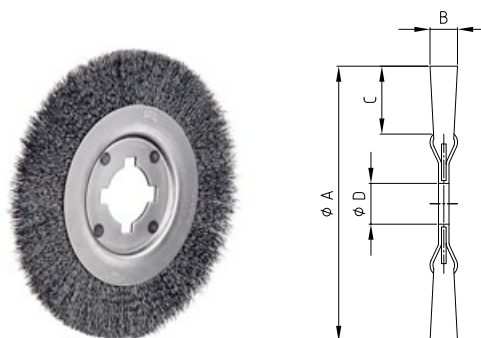
## Wheel brushes, crimped

Wheel brushes are ideal in many manufacturing areas due to their versatility and efficiency. They are ideal for processing solid bars and tubes, sections, weld seams, sheet edges, gears, grooves and narrow areas. RSA wheel brushes with crimped RSA special wire achieve wire tensile strengths of up to 3,000 N/mm<sup>2</sup>. They are characterized by a high impact resistance (number of bends before breaking). A self-sharpening effect is achieved due to micro-flaking of the wire tips. Further features are a high wire density, secure fitting for high peripheral speeds, true running during the entire lifetime and a customized, well coordinated trimming of the brushes. RSA crimped wheel brushes guarantee long lifetimes and short processing times and are designed for any kind of brushing tasks.



### Applications:

- ∴ Deburring
- ∴ Insulation stripping
- ∴ Derusting
- ∴ Paint stripping
- ∴ Roughening



### Wheel brushes, single-row

Ø	Working width	Trim length	Basic bore	maximum rot. speed	RSA special wire 0.15 mm	RSA special wire 0.20 mm	RSA special wire 0.35 mm	RSA special wire 0.50 mm
mm	mm	mm	mm	rpm	Part no.	Part no.	Part no.	Part no.
A	B	C	D					
80	12	15	16	12,000	RSA 110581	RSA 110600	RSA 110650	RSA 110660
100	18	21	20	8,000	RSA 110750	RSA 110780	RSA 110840	RSA 110810
115	15	24	20	8,000	RSA 110900	RSA 110930	RSA 110980	RSA 110990
150	18	28	22.2	6,000	-	RSA 111050	RSA 111080	RSA 111090
178	18	40	40	6,000	-	RSA 111180	RSA 111240	RSA 111280
178	18	29	50.8	6,000	-	RSA 111190	RSA 111250	RSA 111290
200	20	40	50.8	6,000	-	RSA 111330	RSA 111390	RSA 111420
250	20	55	50.8	4,500	-	RSA 111490	RSA 111491	RSA 111492
300	20	55	50.8	3,600	-	RSA 111570	RSA 111595	RSA 111605
350	20	80	50.8	2,400	-	RSA 111613	RSA 111614	RSA 111615
380	20	73	50.8	2,400	-	RSA 111670	RSA 111671	RSA 111672
400	20	80	50.8	2,400	-	RSA 111673	RSA 111674	RSA 111675

Ø	Working width	Trim length	Basic bore	maximum rot. speed	Stainless steel wire 0.15 mm	Stainless steel wire 0.20 mm	Stainless steel wire 0.35 mm	Stainless steel wire 0.50 mm
mm	mm	mm	mm	rpm	Part no.	Part no.	Part no.	Part no.
A	B	C	D					
80	12	15	16	12,000	RSA 111750	RSA 111830	RSA 111860	RSA 111861
100	18	21	20	8,000	RSA 111760	RSA 111840	RSA 111870	RSA 111871
115	15	24	20	8,000	RSA 111770	RSA 111872	RSA 111873	RSA 111874
150	18	28	22.2	6,000	-	RSA 111905	RSA 111910	RSA 111930
178	18	40	40	6,000	-	RSA 111931	RSA 111932	RSA 111933
178	18	29	50.8	6,000	-	RSA 111938	RSA 111936	RSA 111939
200	20	40	50.8	6,000	-	RSA 111914	RSA 111924	RSA 111929
250	20	58	50.8	4,500	-	RSA 111934	RSA 111944	RSA 111949
300	20	55	50.8	3,600	-	RSA 111954	RSA 111970	RSA 111959
350	20	80	50.8	2,400	-	RSA 111960	RSA 111961	RSA 111962
380	20	73	50.8	2,400	-	RSA 111963	RSA 111979	RSA 111924
400	20	80	50.8	2,400	-	RSA 111951	RSA 111952	RSA 111953

RSA can supply other dimensions and types of wire on request



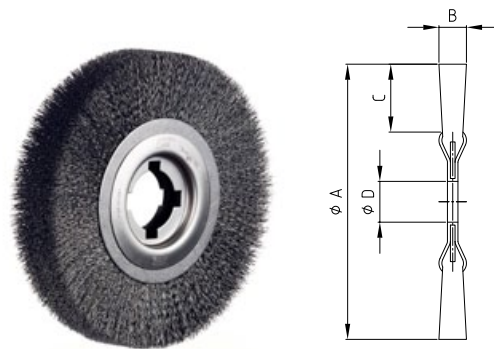
## Wheel brushes, crimped

By mounting several trim rows on a brush, the working width of the brush is increased and a higher density is obtained. Thus the processing area is enlarged, offering a reduced processing time combined with a longer lifetime of the brush. We supply these brushes with working widths of 5 mm to 600 mm.



### Applications:

- ∴ Deburring
- ∴ Insulation stripping
- ∴ Derusting
- ∴ Paint stripping
- ∴ Roughening



### Wheel brushes, multi-row

Ø	Working width	Trim length	Basic bore	maximum rot. speed	RSA special wire 0.15 mm	RSA special wire 0.20 mm	RSA special wire 0.35 mm	RSA special wire 0.50 mm
mm	mm	mm	mm	rpm	Part no.	Part no.	Part no.	Part no.
A	B	C	D					
100	25	25	30	8,000	RSA 110770	RSA 110820	RSA 110860	RSA 110861
125	25	30	40	6,000	RSA 110920	RSA 110950	RSA 111010	RSA 111011
150	25	33	40	6,000	RSA 111030	RSA 111060	RSA 111120	RSA 111131
178	25	37	60	6,000	RSA 111160	RSA 111190	RSA 111250	RSA 111251
200	25	38	80	6,000	RSA 111345	RSA 111346	RSA 111347	RSA 111348
200	40	48	60	6,000	RSA 111320	RSA 111321	RSA 111322	RSA 111323
250	40	55	80	3,600	RSA 111434	RSA 111511	RSA 111531	RSA 111541
300	40	65	100	3,000	RSA 111578	RSA 111581	RSA 111601	RSA 111611
350	40	68	100	2,400	RSA 111583	RSA 111584	RSA 111585	RSA 111586
350	60	68	100	2,400	RSA 111587	RSA 111588	RSA 111589	RSA 111592

Ø	Working width	Trim length	Basic bore	maximum rot. speed	Stainless steel wire 0.15 mm	Stainless steel wire 0.20 mm	Stainless steel wire 0.35 mm	Stainless steel wire 0.50 mm
mm	mm	mm	mm	rpm	Part no.	Part no.	Part no.	Part no.
A	B	C	D					
100	25	25	30	8,000	RSA 111824	RSA 111825	RSA 111845	RSA 111846
125	25	30	40	6,000	RSA 111828	RSA 111829	RSA 111849	RSA 111850
150	25	33	40	6,000	RSA 111906	RSA 111911	RSA 111922	RSA 111923
175	25	45	50	6,000	RSA 111908	RSA 111909	RSA 111910	RSA 111913
178	25	37	50.8	6,000	RSA 111918	RSA 111919	RSA 111982	RSA 111983
200	25	38	80	6,000	RSA 111903	RSA 111904	RSA 111958	RSA 111902
200	40	48	60	6,000	RSA 111901	RSA 111900	RSA 111988	RSA 111989
200	50	38	80	4,500	RSA 111928	RSA 111929	RSA 111992	RSA 111993
250	40	55	80	3,600	RSA 111936	RSA 111946	RSA 111994	RSA 111995
300	40	65	100	3,000	RSA 111956	RSA 111896	RSA 111968	RSA 111969
350	40	68	100	2,400	RSA 111975	RSA 111976	RSA 111977	RSA 111978
350	60	68	100	2,400	RSA 111940	RSA 111941	RSA 111942	RSA 111943

RSA can supply other dimensions and types of wire on request

## Wheel brushes, RASALON

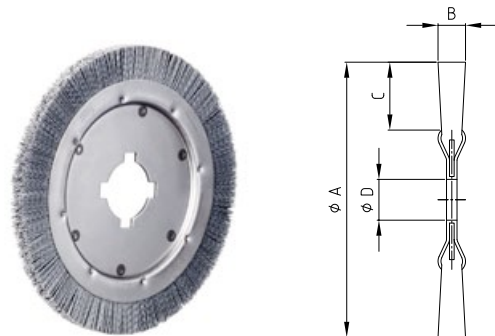
RASALON is a special material consisting of nylon base material together with silicon carbide or aluminium oxide in order to achieve the required grit size. RASALON brushes are suitable for the processing of workpieces with height differences, for the creation of special surface effects as well as the rounding of edges without secondary burr.

- ∴ Characteristics: soft, highly flexible, elastic, working effect between grinding and polishing
- ∴ Application: without addition of abrasives suitable for dry and wet workpieces, also for stainless steel and non-ferrous and specialist metals



### Applications:

- ∴ Deburring of non-ferrous sections, cutting and punching burrs
- ∴ Deburring of turbine blades, engine wheels
- ∴ Removing of oxides and coatings of aircraft surfaces
- ∴ Deburring of gear wheels, pinions, cylinder heads and gearboxes
- ∴ Deburring and precision-grinding of slats and printed boards
- ∴ Brushing of wood furniture and panels
- ∴ Brushing of wood and plywood



### Wheel brushes, single-row

Ø	Working width	Trim length	Basic bore	maximum rot. speed	RASALON grit 80	RASALON grit 120	RASALON grit 180	RASALON grit 320
mm	mm	mm	mm	rpm	Part no.	Part no.	Part no.	Part no.
A	B	C	D					
80	12	15	16	6,000	RSA 114300	RSA 114310	RSA 114320	RSA 114330
100	15	19	20	4,000	RSA 114340	RSA 114350	RSA 114360	RSA 114370
115	15	27	20	4,000	RSA 114371	RSA 114372	RSA 114373	RSA 114374
150	18	28	22.2	2,800	RSA 114380	RSA 114390	RSA 114400	RSA 114410
150	18	28	40	2,800	RSA 114381	RSA 114391	RSA 114401	RSA 114402
178	18	38	40	3,000	RSA 114411	RSA 114412	RSA 114413	RSA 114414
178	18	29	50.8	3,000	RSA 114415	RSA 114416	RSA 114417	RSA 114418
200	20	34	50.8	1,800	RSA 114419	RSA 114429	RSA 114439	RSA 114449
250	20	30	50.8	1,500	RSA 114459	RSA 114469	RSA 114479	RSA 114489
250	25	45	50.8	1,500	RSA 114460	RSA 114470	RSA 114480	RSA 114490
300	20	33	50.8	1,500	RSA 114499	RSA 114509	RSA 114519	RSA 114529
300	30	57	50.8	1,500	RSA 114500	RSA 114510	RSA 114520	RSA 114530
350	20	58	50.8	1,500	RSA 114761	RSA 114762	RSA 114763	RSA 114764
380	20	70	50.8	1,500	RSA 114765	RSA 114766	RSA 114767	RSA 114768
400	20	75	50.8	1,500	RSA 114769	RSA 114770	RSA 114771	RSA 114772

Recommended peripheral speed with RASALON material: max. 22 m/sec

RSA can supply other dimensions and types of wire on request

## Wheel brushes, plastic bonded

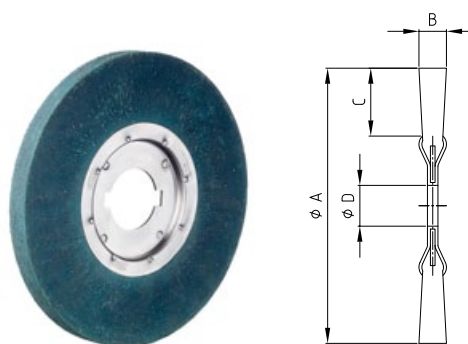
Plastic bonded circular brushes consist of crimped special wire covered with flexible plastic material. The wire tips protrude only slightly from the plastic. The benefits are a well-defined work area and extended lifetimes compared to crimped and knotted wires.

- ∴ Characteristics: not flexible, particularly aggressive, defined work area
- ∴ Application: slight, moderate or heavy brushing tasks
- ∴ Working widths: 3 to 60 mm up to outside diameter 150 mm  
10 to 40 mm up to outside diameter 300 mm



### Applications:

- ∴ Deburring
- ∴ Insulation stripping
- ∴ Derusting
- ∴ Descaling
- ∴ Cleaning



### Wheel brushes, plastic bonded

∅	Working width	Trim length	Basic bore	maximum rot. speed	RSA special wire 0.20 mm	RSA special wire 0.35 mm	RSA special wire 0.50 mm
mm	mm	mm	mm	rpm	Part no.	Part no.	Part no.
<b>A</b>	<b>B</b>	<b>C</b>	<b>D</b>				
150	3	30	22.2	3,000	RSA 112430	RSA 112460	
150	14	30	22.2	3,000	RSA 112440	RSA 112470	RSA 112480
200	20	40	50.8	1,800	RSA 112510	RSA 112530	RSA 112540
250	20	58	50.8	1,500	RSA 112550	RSA 112565	RSA 112570
300	20	65	50.8	1,500	RSA 112575	RSA 112590	RSA 112600

### Wheel brushes, stainless steel wire, plastic bonded

∅	Working width	Trim length	Basic bore	maximum rot. speed	Stainless steel wire 0.20 mm	Stainless steel wire 0.35 mm	Stainless steel wire 0.50 mm
mm	mm	mm	mm	rpm	Part no.	Part no.	Part no.
<b>A</b>	<b>B</b>	<b>C</b>	<b>D</b>				
150	14	30	22.2	3,000	RSA 112705	RSA 112710	RSA 112700
200	20	40	50.8	1,800	RSA 112715	RSA 112725	RSA 112730
250	20	58	50.8	1,500	RSA 112735	RSA 112745	RSA 112750
300	20	65	50.8	1,500	RSA 112755	RSA 112765	RSA 112770

### Insulation stripping brush

∅	Working width	Trim length	Basic bore	maximum rot. speed	RSA special wire 0.10 mm	RSA special wire 0.15 mm	RSA special wire 0.20 mm	RSA special wire 0.25 mm	RSA special wire 0.30 mm
mm	mm	mm	mm	rpm	Part no.	Part no.	Part no.	Part no.	Part no.
<b>A</b>	<b>B</b>	<b>C</b>	<b>D</b>						
20	16	3	5	3,500	RSA 110100	RSA 110101	RSA 110102	RSA 110103	
30	20	6	6	3,500	RSA 110105	RSA 110106	RSA 110107	RSA 110108	RSA 110109
35	20	5	6 / 8 / 9	3,500	RSA 110110	RSA 110111	RSA 110112	RSA 110113	RSA 110114
40	25	7	8 / 10	3,500	RSA 110115	RSA 110116	RSA 110117	RSA 110118	RSA 110119
80	30	7	max. 30	3,500	RSA 110200	RSA 110201	RSA 110202	RSA 110203	RSA 110204

RSA can supply other dimensions and types of wire on request

## Wheel brushes, knotted

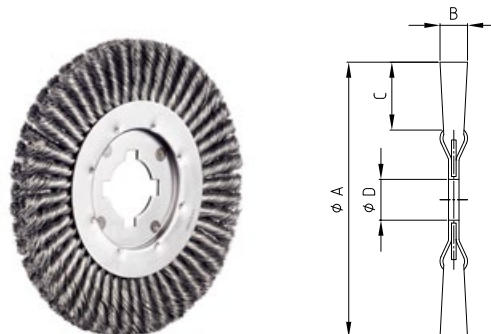
Wheel brushes, knotted, are used in angle grinders and stationary drives. With the knotted special wire, the wheel brush is an aggressive tool which is used for severe brushing tasks.

Example applications are the preparation and refinishing of weld seams as well as the cleaning, de-scaling, derusting of edges. Or as joint brushes they are used in road construction for brushing of split-lines and expansion joints.



### Applications:

- ∴ Descaling
- ∴ Removing of slag
- ∴ Paint stripping
- ∴ Derusting
- ∴ Cleaning



### Wheel brushes, knotted, single-row

Ø mm	Working width	Trim length mm	Basic bore mm	maximum rot. speed rpm	RSA special wire		Stainless steel wire	
	mm				0.35 mm Part no.	0.50 mm Part no.	0.35 mm Part no.	0.50 mm Part no.
	<b>A</b>	<b>C</b>	<b>D</b>					
75	10	13	22.2	12,500	RSA 113010	RSA 113040	RSA 113800	RSA 113850
100	12	25	22.2	12,500	RSA 113050	RSA 113051	RSA 113820	RSA 113821
115	14	25	22.2	12,500	RSA 113060	RSA 113061	RSA 113830	RSA 113831
125	14	30	22.2	12,500	RSA 113064	RSA 113065	RSA 113834	RSA 113835
150	14	35	22.2	12,500	RSA 113090	RSA 113129	RSA 113094	RSA 113104
178	14	40	22.2	12,500	RSA 113280	RSA 113290	RSA 113208	RSA 113209
200	16	40	50.8	8,500	RSA 113350	RSA 113380	RSA 113360	RSA 113390
250	16	40	50.8	4,500	RSA 113460	RSA 113500	RSA 113865	RSA 113870
300	16	55	50.8	3,600	RSA 113590	RSA 113640	RSA 113875	RSA 113890
350	16	80	50.8	2,400	RSA 113811	RSA 113813	RSA 113814	RSA 113815
380	16	65	50.8	2,400	RSA 113816	RSA 113817	RSA 113818	RSA 113819
400	16	75	50.8	2,400	RSA 113901	RSA 113902	RSA 113903	RSA 113904

### Wheel brushes, knotted, single-row (joint brushes)

Ø mm	Working width	Trim length mm	Basic bore mm	maximum rot. speed rpm	RSA special wire	
	mm				0.50 mm Part no.	0.80 mm Part no.
	<b>A</b>	<b>C</b>	<b>D</b>			
300	6	72	50.8	3,600	RSA 113506	RSA 113806
300	8	72	50.8	3,600	RSA 113508	RSA 113808
300	10	72	50.8	3,600	RSA 113510	RSA 113810

### Wheel brushes, knotted, multi-row

Ø mm	Working width	Trim length mm	Basic bore mm	maximum rot. speed rpm	RSA special wire		
	mm				0.35 mm Part no.	0.50 mm Part no.	0.80 mm Part no.
	<b>A</b>	<b>B</b>	<b>C</b>	<b>D</b>			
175	25	40	50.8	12,500	RSA 113205		
200	25	40	50.8	8,500		RSA 113383	RSA 113384
200	35	40	50.8	8,500		RSA 113400	RSA 113401
250	30	55	50.8	4,500		RSA 113404	RSA 113405
300	30	65	50.8	3,600		RSA 113408	RSA 113409

RSA can supply other dimensions and types of wire on request

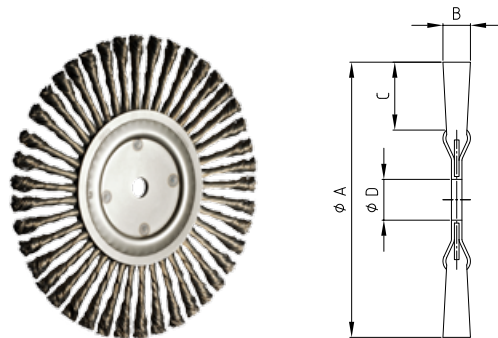
## Wheel brushes, knotted, pipeline

Pipeline brushes are specifically designed for the professional processing of U- and V-shaped weld seams. Due to its extremely slim shape, this type of brush is particularly suitable for the cleaning of weld seams on pipe joints, e.g. in oil, gas and water lines.



### Applications:

- ∴ Inside cleaning of pipelines
- ∴ Outside cleaning of pipelines
- ∴ Removal of insulating layers
- ∴ Cleaning of weld seams



### Wheel brushes, knotted (pipeline brushes)

Ø	Working width	Trim length	maximum rot. speed	RSA special wire 0.50 mm bore hole 22.2 mm	0.50 mm M 14 x 2
mm	mm	mm	rpm	Part no.	Part no.
<b>A</b>	<b>B</b>	<b>C</b>			
115	6	25	12,500	RSA 113080	RSA 113081
125	6	30	12,500	RSA 113086	RSA 113087
150	6	27	12,500	RSA 113130	RSA 113103
178	6	40	12,500	RSA 113250	RSA 113260
178	6	30	12,500	RSA 113255	RSA 113261

Ø	Working width	Trim length	maximum rot. speed	Stainless steel wire 0.50 mm bore hole 22.2 mm	0.50 mm M 14 x 2
mm	mm	mm	rpm	Part no.	Part no.
<b>A</b>	<b>B</b>	<b>C</b>			
115	6	25	12,500	RSA 113180	RSA 113181
125	6	30	12,500	RSA 113230	RSA 113231
150	6	37	12,500	RSA 113105	RSA 113107
178	6	40	12,500	RSA 113251	RSA 113257
178	6	30	12,500	RSA 113555	RSA 113361

RSA can supply other dimensions and types of wire on request

## Wheel brushes, swarf removing brushes

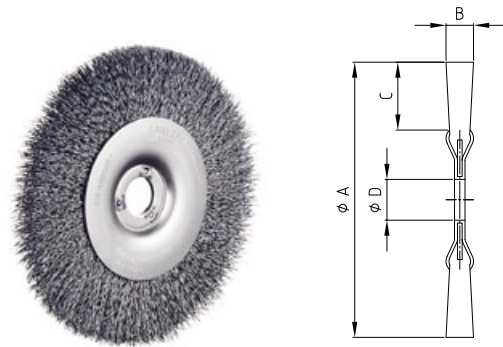
Main application is brushing off swarf on bandsaw and circular saw blades. This is done to protect the saw blade teeth, thereby increasing the lifetime of the saw blade and improving the cutting accuracy.

We supply RSA swarf removing brushes for all types of sawing machines. Simply let us know the manufacturer and the type of the saw used.



### Applications:

∴ Swarf removal



### Wheel brushes for saw blades, swarf removing brushes

Ø	Working width	Trim length	Bore	maximum rot. speed	RSA special wire 0.25 mm Part no.	RSA special wire 0.35 mm Part no.	RSA special wire 0.50 mm Part no.	RSA special wire 1.0 mm Part no.
mm	mm	mm	mm	rpm				
<b>A</b>	<b>B</b>	<b>C</b>	<b>D</b>					
80	20	18	12	10,000	RSA 110501	RSA 110500	RSA 110502	RSA 110503
100	13	21	13	6,000	RSA 110505	RSA 110504	RSA 110506	RSA 111507
125	15	28	16	6,000	RSA 110509	RSA 110508	RSA 110510	RSA 110511

Ø	Working width	Trim length	Bore	maximum rot. speed	Nylon crimped 0.50 mm Part no.	Nylon crimped 0.80 mm Part no.
mm	mm	mm	mm	rpm		
<b>A</b>	<b>B</b>	<b>C</b>	<b>D</b>			
80	15	18	12	4,000	RSA 110512	RSA 110514
100	15	21	12	3,000	RSA 110513	RSA 110515

RSA can supply other dimensions and types of wire on request





## Cup brushes





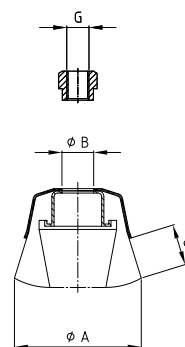
Cup brushes

## Cup brushes, crimped

Cup brushes are tools used for cleaning, e.g. removing rust, paint, dirt or scaling, and for the processing of large surfaces. They are mainly used on angle grinders.

### Applications:

- ∴ Deburring
- ∴ Paint stripping
- ∴ Descaling
- ∴ Cleaning



### Cup brushes, crimped wire

Ø	Receiver thread/bore	Trim length	maximum rot. speed	RSA special wire 0.20 mm	RSA special wire 0.35 mm	RSA special wire 0.50 mm
mm	mm	mm	rpm	Part no.	Part no.	Part no.
A	G or B	C				
65	M 14 x 2	20	12,500	RSA 125103	RSA 125604	RSA 125105
75	M 14 x 2	25	12,500	RSA 125106	RSA 125605	RSA 125108
80	22.2	25	8,500	RSA 125112	RSA 125607	RSA 125114
80	M 14 x 2	25	8,500	RSA 125115	RSA 125608	RSA 125117
100	22.2	30	9,000	RSA 125121	RSA 125610	RSA 125123
100	M 14 x 2	30	9,000	RSA 125124	RSA 125611	RSA 125126
125	22.2	30	8,000	RSA 125130	RSA 125613	RSA 125132
125	M 14 x 2	30	8,000	RSA 125133	RSA 125614	RSA 125135
150	22.2	40	6,500	RSA 125139	RSA 125616	RSA 125141
150	M 14 x 2	40	6,500	RSA 125142	RSA 125617	RSA 125144

Ø	Receiver thread/bore	Trim length	maximum rot. speed	Stainless steel wire 0.20 mm	Stainless steel wire 0.30 mm	Stainless steel wire 0.50 mm	Brass coated 0.30 mm	RASALON grit 80
mm	mm	mm	rpm	Part no.	Part no.	Part no.	Part no.	Part no.
A	G or B	C						
65	M 14 x 2	20	12,500	RSA 125873	RSA 125041	RSA 125875	RSA 125301	RSA 125451
75	M 14 x 2	25	12,500	RSA 125876	RSA 125042	RSA 125878	RSA 125302	RSA 125452
80	22.2	25	8,500	RSA 125882	RSA 125044	RSA 125884	RSA 125304	RSA 125454
80	M 14 x 2	25	8,500	RSA 125885	RSA 125045	RSA 125887	RSA 125305	RSA 125455
100	22.2	30	9,000	RSA 125891	RSA 125047	RSA 125893	RSA 125307	RSA 125457
100	M 14 x 2	30	9,000	RSA 125894	RSA 125048	RSA 125896	RSA 125308	RSA 125458
125	22.2	30	8,000	RSA 125900	RSA 125050	RSA 125902	RSA 125310	RSA 125460
125	M 14 x 2	30	8,000	RSA 125903	RSA 125051	RSA 125905	RSA 125311	RSA 125461
150	22.2	40	6,500	RSA 125909	RSA 125053	RSA 125911	RSA 125313	RSA 125463
150	M 14 x 2	40	6,500	RSA 125912	RSA 125054	RSA 125914	RSA 125314	RSA 125464

RSA can supply other dimensions and types of wire on request

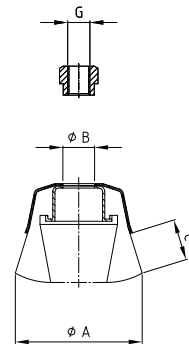
## Cup brushes, RASALON

Cup brushes with straight trimming are mainly used in processing centres. Through the cylindrical cup shape, the trimming is more resistant to centrifugal force. Thus more wire tips are in action.

Starting from working diameters of 65 mm, cup brushes are also available with a support ring. It stabilises the brush and is simply removed when the free wire trimming is worn off. Then further 20 mm of usable wire length are available. This support ring prevents lateral shifting of the trimming material.

### Applications:

- ∴ Deburring
- ∴ Paint stripping
- ∴ Descaling
- ∴ Cleaning



### Cup brushes with support ring

Ø	Receiver thread/bore	Trim length	maximum rot. speed	RASALON grit 80	RASALON grit 120	RASALON grit 180	RASALON grit 320
mm	mm	mm	rpm	Part no.	Part no.	Part no.	Part no.
A	G or B	C					
65	M 14 x 2	20	12,000	RSA 125324	RSA 125325	RSA 125326	RSA 125327
75	M 14 x 2	25	12,500	RSA 125328	RSA 125329	RSA 125330	RSA 125331
80	22.2	25	8,500	RSA 125336	RSA 125337	RSA 125338	RSA 125339
80	M 14 x 2	25	8,500	RSA 125340	RSA 125341	RSA 125342	RSA 125343
100	22.2	30	9,000	RSA 125348	RSA 125349	RSA 125350	RSA 125351
100	M 14 x 2	30	9,000	RSA 125352	RSA 125353	RSA 125354	RSA 125355
125	22.2	30	8,000	RSA 125360	RSA 125361	RSA 125362	RSA 125363
125	M 14 x 2	30	8,000	RSA 125364	RSA 125365	RSA 125366	RSA 125367
150	22.2	40	6,500	RSA 125372	RSA 125373	RSA 125374	RSA 125375
150	M 14 x 2	40	6,500	RSA 125376	RSA 125377	RSA 125378	RSA 125379

RSA can supply other dimensions and types of wire on request

## Cup brushes, knotted

Knotted cup brushes are aggressive tools and are ideally suitable for heavy brushing applications such as the preparation of metal surfaces before painting as well as derusting, de-scaling, removing cinder and concrete residues or for the overall cleaning of large areas.

Double row cup brushes have a larger impact area due to their larger working width. They are often used in the restoration of vehicles.



### Applications:

- ∴ Deburring
- ∴ Paint stripping
- ∴ Derusting
- ∴ Removing of slag
- ∴ Descaling
- ∴ Cleaning



### Knotted cup brushes without support ring, single-row

Ø	Receiver thread/bore	Trim length	maximum rot. speed	RSA special wire 0.35 mm	RSA special wire 0.50 mm	RSA special wire 0.80 mm
mm	mm	mm	rpm	Part no.	Part no.	Part no.
A	G or B	C				
65	M 14 x 2	20	12,500	RSA 125003	RSA 125004	RSA 125005
75	M 14 x 2	20	12,500	RSA 125006	RSA 125007	RSA 125008
80	M 14 x 2	33	12,500	RSA 125009	RSA 125010	RSA 125011
90	M 14 x 2	22	11,500	RSA 125012	RSA 125013	RSA 125014
100	M 14 x 2	25	9,000	RSA 125015	RSA 125016	RSA 125017
125	M 14 x 2	25	7,000	RSA 125018	RSA 125019	RSA 125020
150	M 14 x 2	30	6,600	RSA 125021	RSA 125022	RSA 125023

Ø	Receiver thread/bore	Trim length	maximum rot. speed	Stainless steel wire 0.35 mm	Stainless steel wire 0.50 mm	Stainless steel wire 0.80 mm
mm	mm	mm	rpm	Part no.	Part no.	Part no.
A	G or B	C				
65	M 14 x 2	20	12,500	RSA 125203	RSA 125204	RSA 125205
75	M 14 x 2	20	12,500	RSA 125206	RSA 125200	RSA 125208
80	M 14 x 2	33	12,500	RSA 125209	RSA 125210	RSA 125211
90	M 14 x 2	22	11,500	RSA 125212	RSA 125213	RSA 125214
100	M 14 x 2	25	9,000	RSA 125215	RSA 125216	RSA 125217
125	M 14 x 2	25	7,000	RSA 125218	RSA 125219	RSA 125220
150	M 14 x 2	30	6,600	RSA 125221	RSA 125222	RSA 125223

### Knotted cup brushes without support ring, multi-row

Ø	Receiver thread/bore	Trim length	maximum rot. speed	RSA special wire 0.35 mm	RSA special wire 0.50 mm	RSA special wire 0.80 mm
mm	mm	mm	rpm	Part no.	Part no.	Part no.
A	G or B	C				
100	M 14 x 2	25	9,000	RSA 125600	RSA 125603	RSA 125606
125	M 14 x 2	25	7,000	RSA 125601	RSA 125604	RSA 125607
150	M 14 x 2	25	6,600	RSA 125602	RSA 125605	RSA 125608
200	max. Ø 80	30	4,000	RSA 125931	RSA 125932	RSA 125933

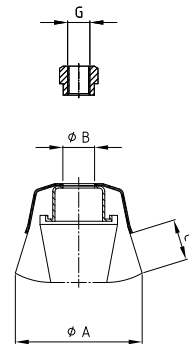
RSA can supply other dimensions and types of wire on request

## Cup brushes, knotted

Starting from working diameters of 80 mm, knotted cup brushes are also available with a support ring. It stabilises the brush and is simply removed when the free wire trimming is worn off. Then further 20 mm of usable wire length are available. Furthermore the support ring prevents lateral shifting of the trimming material.

### Applications:

- ∴ Deburring
- ∴ Paint stripping
- ∴ Derusting
- ∴ Removing slag
- ∴ Descaling
- ∴ Cleaning



### Knotted cup brushes with support ring, single-row

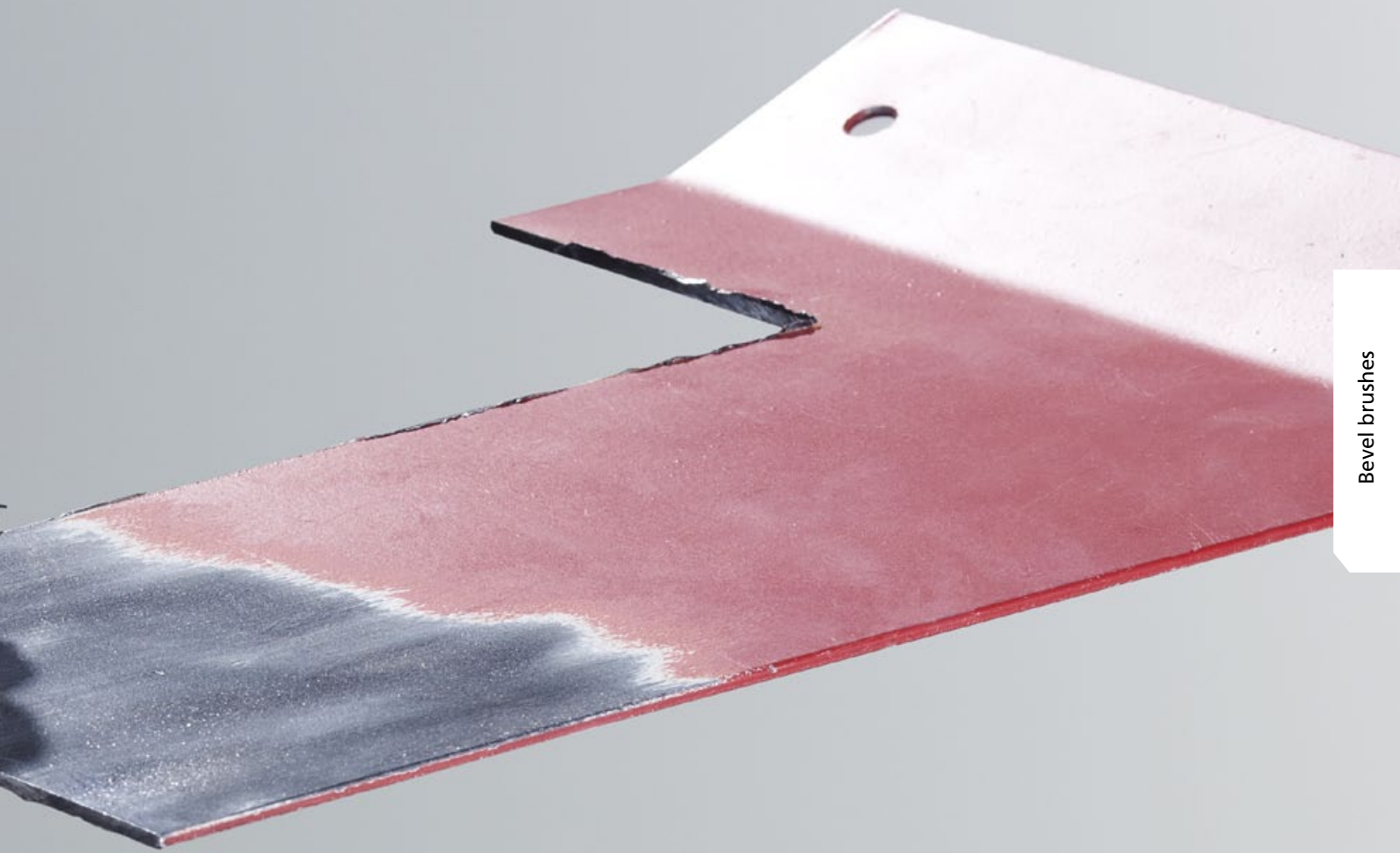
Ø	Receiver thread/bore	Trim length	maximum rot. speed	RSA special wire 0.35 mm	RSA special wire 0.50 mm	RSA special wire 0.80 mm
mm	mm	mm	rpm	Part no.	Part no.	Part no.
A	G or B	C				
80	22.2	25	9,000	RSA 125400	RSA 125401	RSA 125402
80	M 14 x 2	25	9,000	RSA 125403	RSA 125404	RSA 125405
100	22.2	23	9,000	RSA 125409	RSA 125410	RSA 125411
100	M 14 x 2	23	9,000	RSA 125412	RSA 125413	RSA 125414
125	22.2	25	7,000	RSA 125418	RSA 125419	RSA 125420
125	M 14 x 2.0	25	7,000	RSA 125421	RSA 125422	RSA 125423

Ø	Receiver thread/bore	Trim length	maximum rot. speed	Stainless steel wire 0.35 mm	Stainless steel wire 0.50 mm
mm	mm	mm	rpm	Part no.	Part no.
A	G or B	C			
80	22.2	25	9,000	RSA 125850	RSA 125860
80	M 14 x 2	25	9,000	RSA 125851	RSA 125861
100	22.2	23	9,000	RSA 125853	RSA 125863
100	M 14 x 2	23	9,000	RSA 125854	RSA 125864
125	22.2	25	7,000	RSA 125856	RSA 125866
125	M 14 x 2	25	7,000	RSA 125857	RSA 125867

RSA can supply other dimensions and types of wire on request



## Bevel brushes



Bevel brushes

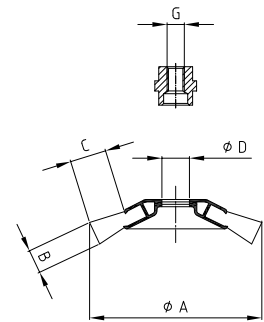
## Bevel brushes, knotted

Bevel brushes are ideal for medium duty brushing work like deburring, cleaning and derusting. The bevel shape of the brush body facilitates the work in places that are difficult to reach, for example inside edges, slots and grooves. Bevel brushes with knotted wire are suitable for heavy duty brushing work.



### Applications:

- ∴ Deburring
- ∴ Paint stripping
- ∴ Derusting
- ∴ Descaling
- ∴ Removing slag
- ∴ Cleaning



### Knotted bevel brushes

Ø	Working width	Receiver thread/bore	Trim length	maximum rot. speed	RSA special wire 0.35 mm	RSA special wire 0.50 mm	Stainless steel wire 0.35 mm	Stainless steel wire 0.50 mm
mm	mm	mm	mm	rpm	Part no.	Part no.	Part no.	Part no.
A	B	G/D	C					
100	12	M 14 x 2	20	12,500	RSA 125701	RSA 125706	RSA 125712	RSA 125716
100	12	22.2	20	12,500	RSA 125702	RSA 125708	RSA 125713	RSA 125717
115	12	M 14 x 2	24	12,500	RSA 125703	RSA 125709	RSA 125714	RSA 125718
115	12	22.2	24	12,500	RSA 125704	RSA 125710	RSA 125719	RSA 125723

RSA can supply other dimensions and types of wire on request

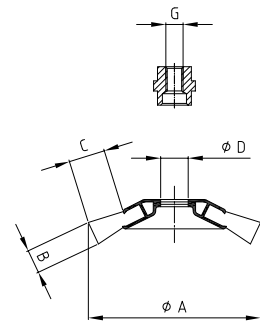


# Bevel brushes, crimped

Bevel brushes with crimped wire are ideal for light to medium duty brushing workpieces e.g. for the deburring of cast bodies in the automotive industry.

### Applications:

- ∴ Deburring
- ∴ Derusting
- ∴ Descaling
- ∴ Removing slag
- ∴ Cleaning



### Bevel brushes, crimped special wire

Ø	Working width	Receiver thread/bore	Trim length	maximum rot. speed	steel wire, brassed, 0.30 mm	RSA special wire 0.35 mm	Corded RSA steel wire, brass coated, 0.38 mm
mm	mm	mm	mm	rpm	Part no.	Part no.	Part no.
<b>A</b>	<b>B</b>	<b>G</b>	<b>C</b>				
100	12	M 14 x 2	20	12,500	RSA 125722	RSA 125720	RSA 125725
115	12	M 14 x 2	24	12,500	RSA 125728	RSA 125729	RSA 125730

Ø	Working width	Receiver thread/bore	Trim length	maximum rot. speed	Stainless steel wire 0.30 mm	Corded RSA stainless steel wire 0.35 mm
mm	mm	mm	mm	rpm	Part no.	Part no.
<b>A</b>	<b>B</b>	<b>G</b>	<b>C</b>			
100	12	M 14 x 2	20	12,500	RSA 125721	RSA 125726
115	12	M 14 x 2	24	12,500	RSA 125731	RSA 125732



## Shanked brushes



Shanked brushes

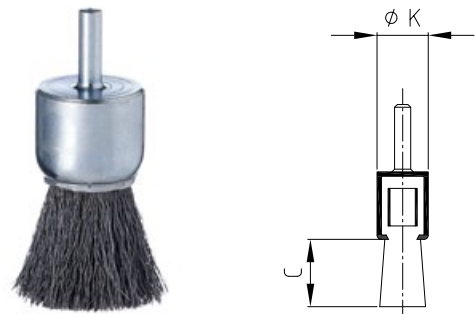
## Shanked brushes, end brushes

End brushes with mounted shank are ideal for the cleaning and deburring of areas particularly difficult to access, for removing paint and rubber residues as well as for the cleaning of moulds and castings. With these brushes you can treat corners and curves without any problems and remove burrs, rust, slag, scale and other contamination. The type with RASALON trimming is designed for light-duty treatments. The trimming adapts perfectly to the contours of the workpiece without removing material.

RSA end brushes with a shank can be used with straight grinders, pneumatic tools and high-speed driving equipment.

### Applications:

- ∴ Removing of paint and rubber residues
- ∴ Cleaning of moulds and castings
- ∴ Deburring
- ∴ Paint stripping
- ∴ Removing slag
- ∴ Descaling
- ∴ Cleaning
- ∴ Removing dust



### End brushes with shaft Ø 6 mm

Ø body mm	Trim length mm	maximum rot. speed rpm	RASALON grit 80 Part no.	RASALON grit 120 Part no.	RASALON grit 180 Part no.	RASALON grit 320 Part no.
K	C					
11	25	5,000	RSA 128902	RSA 128903	RSA 128904	
16	25	5,000	RSA 128906	RSA 128907	RSA 128908	
22	25	5,000	RSA 128909	RSA 128910	RSA 128911	RSA 128912
30	30	5,000	RSA 128913	RSA 128914	RSA 128915	RSA 128916

Ø body mm	Trim length mm	maximum rot. speed rpm	RSA special wire 0.15 mm Part no.	RSA special wire 0.20 mm Part no.	RSA special wire 0.30 mm Part no.	RSA special wire 0.50 mm Part no.
K	C					
11	20	18,000	RSA 128001	RSA 128002		
16	25	15,000	RSA 128021	RSA 128302	RSA 128024	RSA 128026
22	25	15,000	RSA 128501	RSA 128502	RSA 128054	RSA 128056
30	30	12,000	RSA 128701	RSA 128062	RSA 128064	RSA 128066

Ø body mm	Trim length mm	maximum rot. speed rpm	Stainless steel wire 0.15 mm Part no.	Stainless steel wire 0.20 mm Part no.	Stainless steel wire 0.30 mm Part no.
K	C				
11	20	18,000	RSA 128101	RSA 128103	
16	25	15,000	RSA 128102	RSA 128123	RSA 128124
22	25	15,000	RSA 128105	RSA 128153	RSA 128154
30	30	12,000	RSA 128106	RSA 128163	RSA 128164

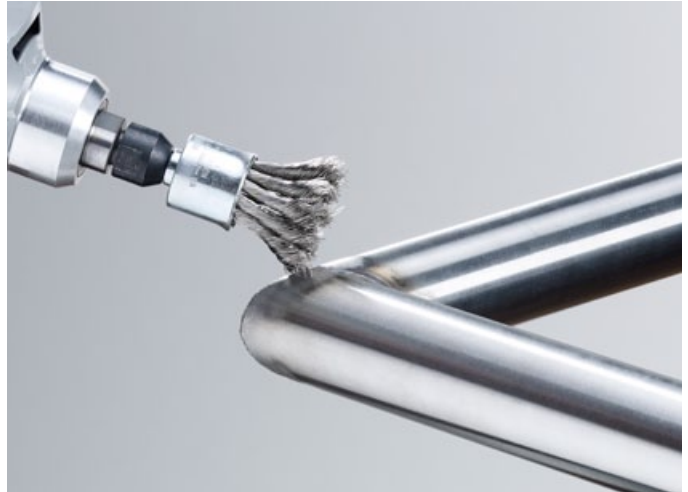
Ø body mm	Trim length mm	maximum rot. speed rpm	Brass wire 0.20 mm Part no.	Brass wire 0.30 mm Part no.	Corded, brass coated steel wire 0.20 mm Part no.	Corded, brass coated steel wire 0.27 mm Part no.
K	C					
11	20	18,000	RSA 128702		RSA 128401	
16	25	15,000	RSA 128732	RSA 128734	RSA 128403	RSA 128404
22	25	15,000	RSA 128752	RSA 128754	RSA 128405	RSA 128406
30	30	12,000	RSA 128802	RSA 128804	RSA 128407	RSA 128408

RSA can supply other dimensions and types of wire on request

## Shanked brushes, end brushes, knotted

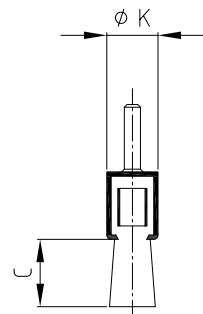
This brush type is ideal for processing weld seams or places that are difficult to reach e.g. bore holes or hollows of housing components. The faster the speed, the more the brush opens (spreads), for this reason it is very versatile.

In versions with stainless steel wire, the brush is coated with plastic to protect delicate stainless steel workpieces.



### Applications:

- ∴ Removing of paint and rubber residues
- ∴ Cleaning of moulds and castings
- ∴ Deburring
- ∴ Paint stripping
- ∴ Removing slag
- ∴ Descaling
- ∴ Cleaning
- ∴ Removing dust



### Knotted end brushes with shaft Ø 6 mm

Ø body mm	Trim length mm	maximum rot. speed rpm	RSA special wire			
			0.15 mm Part no.	0.26 mm Part no.	0.35 mm Part no.	0.50 mm Part no.

<b>K</b>	<b>C</b>					
20	29	22,000	RSA 116700	RSA 116710	RSA 116720	RSA 116730
spread on Ø mm at 5,000 / 8,000 / 15,000 rpm:			55 / 70 / 80	55 / 70 / 75	25 / 50 / 70	25 / 50 / 70

23	29	20,000	RSA 116740	RSA 116750	RSA 116760	RSA 116770
spread on Ø mm at 5,000 / 8,000 / 15,000 rpm:			70 / 80 / 90	40 / 65 / 75	35 / 55 / 70	30 / 50 / 65

30	29	20,000	RSA 116780	RSA 116790	RSA 116800	RSA 116810
spread on Ø mm at 5,000 / 8,000 / 15,000 rpm:			70 / 80 / 90	55 / 70 / 85	50 / 70 / 80	40 / 55 / 70

Ø body mm	Trim length mm	maximum rot. speed rpm	Stainless steel wire			
			0.15 mm Part no.	0.26 mm Part no.	0.35 mm Part no.	0.50 mm Part no.

<b>K</b>	<b>C</b>					
20	29	22,000	RSA 116850	RSA 116860	RSA 116870	
spread on Ø mm at 5,000 / 8,000 / 15,000 rpm:			55 / 70 / 80	55 / 70 / 75	25 / 50 / 70	

23	29	20,000	RSA 116880	RSA 116890	RSA 116900	
spread on Ø mm at 5,000 / 8,000 / 15,000 rpm:			70 / 80 / 90	40 / 65 / 75	35 / 55 / 70	

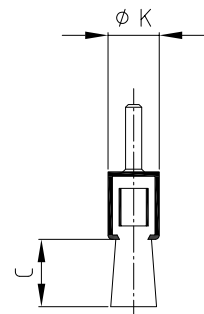
30	29	20,000	RSA 116910	RSA 116920	RSA 116930	RSA 116950
spread on Ø mm at 5,000 / 8,000 / 15,000 rpm:			70 / 80 / 90	55 / 70 / 85	50 / 70 / 80	

## Shanked brushes, end brushes, plastic bonded

In this version, the special wires are embedded in a plastic compound. Thus the diameter of the brush remains stable during rotation. In this way the processing of defined surfaces is possible, resulting at the same time in a longer lifetime of the brush and a reduced processing time.

### Applications:

- ∴ Roughening
- ∴ Deburring
- ∴ Paint stripping
- ∴ Removing slag
- ∴ Descaling
- ∴ Cleaning



### End brushes with shaft Ø 6 mm, plastic bonded

Ø body mm	Trim length mm	maximum rot. speed rpm	RSA special wire 0.15 mm Part no.	RSA special wire 0.30 mm Part no.	RSA special wire 0.50 mm Part no.
<b>K</b>	<b>C</b>				
11	20	13,000	RSA 128203		
16	25	13,000	RSA 128221	RSA 128224	RSA 128226
22	25	11,000	RSA 128253	RSA 128254	RSA 128256
30	30	10,000	RSA 128263	RSA 128264	RSA 128266

Ø body mm	Trim length mm	maximum rot. speed rpm	Stainless steel wire 0.15 mm Part no.	Stainless steel wire 0.30 mm Part no.	Stainless steel wire 0.50 mm Part no.
<b>K</b>	<b>C</b>				
11	20	13,000	RSA 128301		
16	25	13,000	RSA 128321	RSA 128324	RSA 128326
22	25	11,000	RSA 128353	RSA 128354	RSA 128356
30	30	10,000	RSA 128363	RSA 128364	RSA 128366

RSA can supply other dimensions and types of wire on request

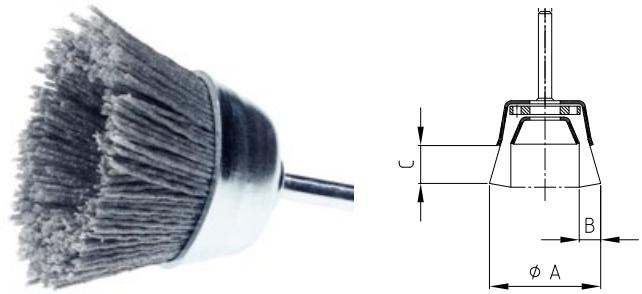
# Shanked brushes, cup brushes

Shanked brushes are designed for the use in stationary drives and manual machines. They are used mainly for surface treatment, e.g. for the derusting, deburring, structuring and for the removal of paint, rubber coatings or underbody coating.

Cup brushes with shank are mainly used for the processing of small and medium-size surfaces.

### Applications:

- ∴ Derusting
- ∴ Deburring
- ∴ Structuring
- ∴ Paint stripping
- ∴ Cleaning



### Cup brushes with shaft Ø 6 mm

Ø	Working width	Trim length	maximum rot. speed	RSA special wire 0.20 mm	RSA special wire 0.30 mm
mm	mm	mm	rpm	Part no.	Part no.
<b>A</b>	<b>B</b>	<b>C</b>			
40	10	20	10,500	RSA 125027	RSA 125028
50	10	20	10,500	RSA 125029	RSA 125030
60	10	25	8,000	RSA 125031	RSA 125032
70	15	25	6,000	RSA 125033	RSA 125034

Ø	Working width	Trim length	maximum rot. speed	Stainless steel wire 0.20 mm	Stainless steel wire 0.30 mm
mm	mm	mm	rpm	Part no.	Part no.
<b>A</b>	<b>B</b>	<b>C</b>			
40	10	20	10,500	RSA 125227	RSA 125228
50	10	20	10,500	RSA 125229	RSA 125230
60	10	25	8,000	RSA 125231	RSA 125233
70	15	25	6,000	RSA 125234	RSA 125235

Ø	Working width	Trim length	maximum rot. speed	Brass wire 0.20 mm
mm	mm	mm	rpm	Part no.
<b>A</b>	<b>B</b>	<b>C</b>		
40	10	20	10,500	RSA 125427
50	10	20	10,500	RSA 125428
60	10	25	8,000	RSA 125429
70	15	25	6,000	RSA 125430

Ø	Working width	Trim length	maximum rot. speed	RASALON grit 80	RASALON grit 320
mm	mm	mm	rpm	Part no.	Part no.
<b>A</b>	<b>B</b>	<b>C</b>			
40	10	20	4,500	RSA 125380	RSA 125381
50	10	20	4,500	RSA 125382	RSA 125383
60	10	25	4,500	RSA 125384	RSA 125385

RSA can supply other dimensions and types of wire on request

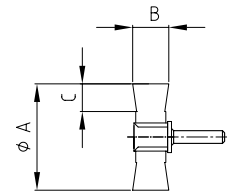
## Shanked brushes, wheel brushes

Wheel brushes with mounted shank are suitable for professional use. They are characterized by a high wire density and exact true running.

The small diameter of these brushes allows an easy processing on places that are difficult to reach. The applications are slight to moderate brushing tasks of steel and stainless steel.

### Applications:

- ∴ Derusting
- ∴ Deburring
- ∴ Structuring
- ∴ Paint stripping
- ∴ Cleaning



### Circular tool brushes with shank Ø 6 mm

Ø	Working width	Trim length	maximum rot. speed	RSA special wire 0.15 mm	RSA special wire 0.20 mm	RSA special wire 0.30 mm
mm	mm	mm	rpm	Part no.	Part no.	Part no.
<b>A</b>	<b>B</b>	<b>C</b>				
20	8	3	20,000	RSA 121002	RSA 121001	
30	12	6	20,000	RSA 121026	RSA 121032	RSA 121027
40	10	9	18,000	RSA 121051	RSA 121056	RSA 121055
40	16	9	18,000	RSA 121052	RSA 121057	RSA 121054
50	10	12	15,000	RSA 121076	RSA 121081	RSA 121091
50	16	12	15,000	RSA 121077	RSA 121082	RSA 121084
60	18	17	15,000	RSA 121101	RSA 121107	RSA 121117
70	16	19	15,000	RSA 121126	RSA 121131	RSA 121141
70	18	19	15,000	RSA 121127	RSA 121132	RSA 121142
70	25	14	15,000	RSA 121128	RSA 121133	RSA 121143
80	18	20	15,000	RSA 121151	RSA 121147	RSA 121148

Ø	Working width	Trim length	maximum rot. speed	Stainless steel wire 0.15 mm	Stainless steel wire 0.20 mm	Stainless steel wire 0.30 mm
mm	mm	mm	rpm	Part no.	Part no.	Part no.
<b>A</b>	<b>B</b>	<b>C</b>				
20	8	3	20,000	RSA 121201	RSA 121221	
30	12	6	20,000	RSA 121230	RSA 121231	RSA 121226
40	10	9	18,000	RSA 121251	RSA 121253	RSA 121266
40	16	9	18,000	RSA 121252	RSA 121257	RSA 121267
50	10	12	15,000	RSA 121276	RSA 121281	RSA 121291
50	16	12	15,000	RSA 121277	RSA 121282	RSA 121292
60	18	17	15,000	RSA 121301	RSA 121315	RSA 121317
70	16	19	15,000	RSA 121326	RSA 121331	RSA 121341
70	18	19	15,000	RSA 121327	RSA 121332	RSA 121342
80	18	20	15,000	RSA 121328	RSA 121348	RSA 121350

RSA can supply other dimensions and types of wire on request



# Shanked brushes, wheel brushes

Wheel brushes with shank are suitable for professional use. They are characterized by a high wire density and exact true running.

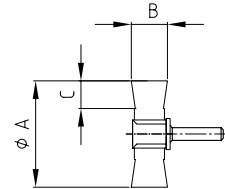
The small diameter of these brushes allows an easy processing on places that are difficult to reach. The applications are slight to moderate brushing tasks. The wire type RASALON is used especially for deburring and structuring of aluminum, stainless steel and plastic. Wooden surfaces are structured preferably with brass coated steel wire.

Wheel brushes with stainless steel wire prevent the formation of rust even in a very humid working environment.



## Applications:

- ∴ Derusting
- ∴ Deburring
- ∴ Structuring
- ∴ Paint stripping
- ∴ Cleaning



## Wheel brushes with mounted shank Ø 6 mm

Ø	Working width	Trim length	maximum rot. speed	Brass coated steel wire, crimped 0.25 mm	Brass 0.20 mm
mm	mm	mm	rpm	Part no.	Part no.
A	B	C			
20	8	3	20,000		RSA 121430
30	9	6	20,000	RSA 121561	RSA 121431
40	10	9	18,000	RSA 121563	RSA 121456
40	16	9	18,000	RSA 121564	RSA 121457
50	10	12	15,000	RSA 121565	RSA 121481
50	16	12	15,000	RSA 121566	RSA 121482
60	10	17	15,000	RSA 121567	RSA 121506
70	16	19	15,000	RSA 121569	RSA 121531
70	18	19	15,000	RSA 121570	RSA 121532
70	25	14	15,000	RSA 121571	RSA 121533
80	18	20	15,000	RSA 121573	RSA 121535
100	16	25	8,000	RSA 121574	RSA 121536

Ø	Working width	Trim length	maximum rot. speed	RASALON grit 80	RASALON grit 120	RASALON grit 180	RASALON grit 320
mm	mm	mm	rpm	Part no.	Part no.	Part no.	Part no.
A	B	C					
70	16	20	15,000	RSA 121704	RSA 121705	RSA 121706	RSA 121707
80	16	22	12,000	RSA 121708	RSA 121709	RSA 121710	RSA 121711
100	16	32	12,000	RSA 121712	RSA 121713	RSA 121714	RSA 121715

## Wheel brushes with mounted shank Ø 6 mm, completely stainless, crimped

Ø	Working width	Trim length	maximum rot. speed	Stainless steel wire 0.15 mm	Stainless steel wire 0.20 mm	Stainless steel wire 0.30 mm
mm	mm	mm	rpm	Part no.	Part no.	Part no.
A	B	C				
50	16	12	15,000	RSA 121280	RSA 121580	RSA 121584
60	16	17	15,000	RSA 121305	RSA 121582	RSA 121585
70	16	19	15,000	RSA 121330	RSA 121583	RSA 121586

RSA can supply other dimensions and types of wire on request

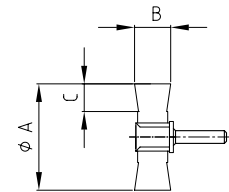
## Shanked brushes, wheel brushes, knotted

Aggressive wheel brush for extreme use with high peripheral speeds. The ideal tool to remove underbody protection, for deburring, paint stripping, descaling and weld cleaning.

RSA wheel brushes with mounted shaft, knotted, can be used with flexible shafts, drilling machines and pressurized air grinders.

### Applications:

- ∴ Removal of underbody protection
- ∴ Paint stripping
- ∴ Deburring
- ∴ Derusting
- ∴ Removing of slag
- ∴ Descaling
- ∴ Weld cleaning



### Wheel brushes, with mounted shank Ø 6 mm, knotted

Ø	Working width	Trim length	maximum rot. speed	RSA special wire 0.35 mm	RSA special wire 0.50 mm
mm	mm	mm	rpm	Part no.	Part no.
<b>A</b>	<b>B</b>	<b>C</b>			
75	9	15	15,000	RSA 121600	RSA 121601
75	12	15	15,000	RSA 121602	RSA 121603
75	16	15	15,000	RSA 121604	RSA 121605

Ø	Working width	Trim length	maximum rot. speed	Stainless steel wire 0.35 mm	Stainless steel wire 0.50 mm
mm	mm	mm	rpm	Part no.	Part no.
<b>A</b>	<b>B</b>	<b>C</b>			
75	9	15	15,000	RSA 121946	RSA 121606
75	12	15	15,000	RSA 121947	RSA 121607
75	16	15	15,000	RSA 121948	RSA 121608

RSA can supply other dimensions and types of wire on request

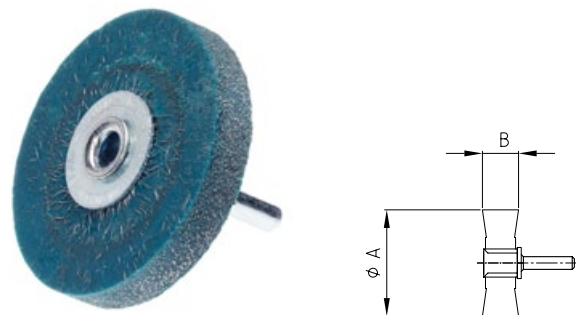
## Shanked brushes, wheel brushes, plastic bonded

Plastic bonded wheel brushes are made of crimped special wire covered by elastic plastic material. The wire tips protrude only slightly from the plastic. The benefits are an exactly defined work area and an extended lifetime compared to crimped and knotted wires.



### Applications:

- ∴ Deburring
- ∴ Insulation stripping
- ∴ Derusting
- ∴ Descaling
- ∴ Cleaning



### Wheel brushes, plastic bonded with mounted shank Ø 6 mm

Ø mm	Working width		maximum rot. speed rpm	RSA special wire 0.20 mm	
	A	B		Part no.	Part no.
40	5		10,000	RSA 121656	
40	10		10,000	RSA 121657	RSA 121672
40	15		10,000	RSA 121658	RSA 121673
50	5		8,000	RSA 121681	RSA 121696
50	10		8,000	RSA 121682	RSA 121697
50	15		8,000	RSA 121683	RSA 121698
60	10		6,000	RSA 121684	RSA 121699
70	5		6,000	RSA 121731	RSA 121746
70	10		6,000	RSA 121732	RSA 121747
70	15		6,000	RSA 121733	RSA 121748

Ø mm	Working width		maximum rot. speed rpm	Stainless steel wire		
	A	B		0.15 mm Part no.	0.20 mm Part no.	0.30 mm Part no.
40	5		10,000	RSA 121851	RSA 121856	
40	10		10,000	RSA 121852	RSA 121857	RSA 121867
40	15		10,000	RSA 121853	RSA 121858	RSA 121868
50	5		8,000	RSA 121876	RSA 121881	RSA 121891
50	10		8,000	RSA 121877	RSA 121882	RSA 121892
50	15		8,000	RSA 121878	RSA 121883	RSA 121893
60	10		6,000	RSA 121879	RSA 121884	RSA 121894
70	5		6,000	RSA 121926	RSA 121931	RSA 121941
70	10		6,000	RSA 121927	RSA 121932	RSA 121942
70	15		6,000	RSA 121928	RSA 121933	RSA 121943

RSA can supply other dimensions and types of wire on request



## Internal brushes



Internal brushes

## Internal brushes, RASALON

RSA internal brushes are available for various applications. All of them are characterized by high quality and a wide variety of available materials.

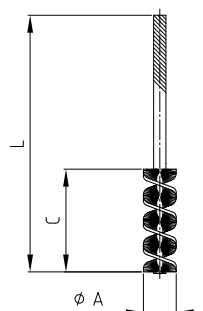
The nylon filament of RASALON internal brushes added with silicon carbide, means that - in comparison with conventional internal brushes - application areas are much more various. They are optimally suited for the processing of complex work-pieces of steel and non-ferrous metals, particularly automated applications.

**RSA internal brushes are also available with aluminium oxide for specialist applications.**



### Applications:

- ∴ Deburring and rounding of edges of drill holes, cross holes, O-ring grooves, threads, grooves
- ∴ Cleaning and polishing of cylinders, nozzle bores



### RSA internal brushes - RASALON

Outside Ø	Working length	Overall length	maximum rot. speed	RASALON grit 80	RASALON grit 120	RASALON grit 180	RASALON grit 320
mm	mm	mm	rpm	Part no.	Part no.	Part no.	Part no.
A	C	L					
8	50	125	3,000	-	-	RSA 118719	RSA 118721
10	50	125	3,000	RSA 118700	RSA 118725	RSA 118726	RSA 118727
13	50	125	3,000	RSA 118710	RSA 118731	RSA 118732	RSA 118733
16	50	125	3,000	RSA 118720	RSA 118736	RSA 118737	RSA 118738
19	65	125	3,000	RSA 118730	RSA 118742	RSA 118743	RSA 118744
22	65	125	3,000	RSA 118740	RSA 118747	RSA 118748	RSA 118751
25	65	125	3,000	RSA 118750	RSA 118754	RSA 118755	RSA 118759
28	65	125	3,000	RSA 118756	RSA 118757	RSA 118758	RSA 118765
30	65	125	3,000	RSA 118760	RSA 118763	RSA 118764	RSA 118768
32	65	125	3,000	RSA 118761	RSA 118771	RSA 118772	RSA 118773

**RSA can supply other dimensions and types of wire on request**

## Internal brushes, special wire

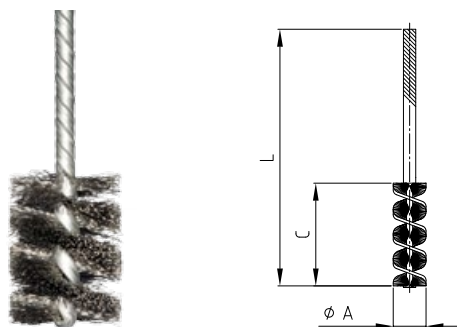
These internal brushes are with flexible heavy duty steel wire or with stainless steel wire.

The brushes are characterised by a spirally arranged high density filament. As the shaft is manufactured with special oval wire, these interior brushes are suitable for anticlockwise and clockwise rotation.

The operational reliability and a long working life is ensured even at high speeds.

### Applications:

- ∴ Deburring of drill holes, cross holes,  
O-ring grooves, grooves
- ∴ Cleaning of threads



### RSA internal brushes - special wire

Outside Ø	Working length	Overall length	Shaft	RSA special wire 0.12 mm	RSA special wire 0.20 mm	Stainless steel wire 0.15 mm	Stainless steel wire 0.20 mm
mm	mm	mm	mm	Part no.	Part no.	Part no.	Part no.
<b>A</b>	<b>C</b>	<b>L</b>					
5	25	125	2.4	RSA 117603		RSA 117803	
5.5	25	125	2.4	RSA 117623		RSA 117823	
6	25	125	2.4	RSA 117600		RSA 117843	
6.6	25	125	2.4	RSA 117663		RSA 117863	
7	25	125	3	RSA 117683	RSA 117743	RSA 117883	
7.7	25	125	3	RSA 117703	RSA 117763	RSA 117913	RSA 117915
8.8	25	125	3	RSA 117723	RSA 117783	RSA 117914	RSA 117916
10	25	125	3.2	RSA 117640	RSA 117630	RSA 117641	RSA 117642
11	25	125	3.2	RSA 117660	RSA 117650	RSA 117661	RSA 117662
12	25	125	3.2	RSA 117680	RSA 117690	RSA 117681	RSA 117682
14	25	125	3.2	RSA 117700	RSA 117710	RSA 117701	RSA 117702
16	25	125	3.2	RSA 117720	RSA 117730	RSA 117721	RSA 117722
18	25	125	3.2	RSA 117740	RSA 117750		RSA 117742
19	25	125	3.2	RSA 117760	RSA 117770		RSA 117762
20	25	125	4	RSA 117780	RSA 117790	RSA 117781	RSA 117782
22	25	125	4	RSA 117800	RSA 117810		RSA 117801
24	25	125	4	RSA 117820	RSA 117830		RSA 117882
25	25	125	6	RSA 117840	RSA 117850	RSA 117841	RSA 117842
27	25	125	6	RSA 117860	RSA 117870		RSA 117862
29	25	125	6	RSA 117880	RSA 117890		RSA 117881
32	25	125	6	RSA 117910	RSA 117920		RSA 117912
35	25	125	6	RSA 117917	RSA 117918		RSA 117919

RSA can supply other dimensions and types of wire on request

## Internal brushes, micro-abrasive

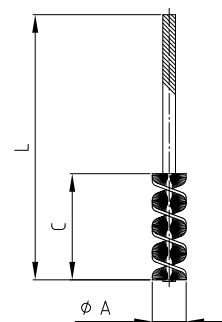
Micro-abrasive internal brushes are available with particularly small diameters and very fine grains made of aluminium oxide or silicon carbide.

For this reason they are ideal for use with small delicate bore holes, threads and O-ring grooves, e.g. in the medical and automotive industry



### Applications:

- ∴ Deburring of drill holes, cross holes, O-ring grooves, threads
- ∴ Polishing of nozzles and small holes
- ∴ Cleaning of nozzles and small holes



### RSA micro-abrasive internal brushes

Outside $\phi$ mm	Working length mm	Overall length mm	Shaft  S	SIC K1000  Part no.	AluOx K 600  Part no.	SIC K 400  Part no.
0.7	15	100	0.42	RSA 118769		
1.2	15	100	0.5	RSA 118770		
1.8	18	100	0.8	RSA 118774		
2.2	18	100	0.8	RSA 118775		
2.6	25	100	1.1	RSA 118776		
3.3	25	100	1.6	RSA 118777		
3.5	25	100	1.6	RSA 118778		
4.3	25	125	2.2		RSA 118779	RSA 118800
4.8	25	125	2.2		RSA 118780	RSA 118801
5	25	125	2.2		RSA 118781	RSA 118802
5.5	25	125	2.2		RSA 118782	RSA 118803
6	25	125	3		RSA 118783	RSA 118804
6.6	25	125	3		RSA 118784	RSA 118805
7	25	125	3		RSA 118785	RSA 118806
7.7	25	125	3		RSA 118786	RSA 118807
8.8	25	125	3.4		RSA 118787	RSA 118808
10	25	125	3.4		RSA 118788	RSA 118809
11.5	25	125	4.2		RSA 118789	RSA 118810
13	25	125	4.2		RSA 118791	RSA 118811
14.5	25	125	4.2		RSA 118792	RSA 118812
16	25	125	4.2		RSA 118793	RSA 118813
17.5	25	125	4.2		RSA 118794	RSA 118814
19.5	25	125	5.6		RSA 118795	RSA 118815
22.5	25	125	6.2		RSA 118796	RSA 118816
26	25	125	6.2		RSA 118797	RSA 118817
29	25	125	6.2		RSA 118798	RSA 118818
32	25	125	6.2		RSA 118799	RSA 118819

RSA can supply other dimensions and types of wire on request

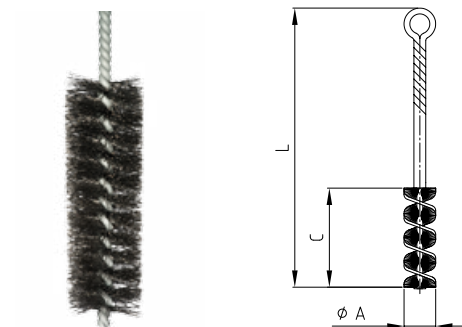


## Internal brushes, with loop

This brush type is used for the manual cleaning and deburring of tubes and holes.

### Applications:

- ∴ Deburring of holes, cross holes, O-ring grooves, threads
- ∴ Polishing of nozzles and small holes
- ∴ Cleaning of nozzles and small holes
- ∴ Cleaning of tubes, grids, sockets and cylinders



### RSA internal brush with loop

Outside Ø mm	Working length mm	Overall length mm	Steel wire Part no.	Stainless steel wire Part no.	Brass wire Part no.	Nylon Part no.
<b>A</b>	<b>C</b>	<b>L</b>				
3	100	300	RSA 152303	RSA 152103	RSA 152353	RSA 152403
4	100	300	RSA 152304	RSA 152104	RSA 152354	RSA 152404
5	100	300	RSA 152305	RSA 152105	RSA 152355	RSA 152405
6	100	300	RSA 152306	RSA 152106	RSA 152356	RSA 152406
8	100	300	RSA 152308	RSA 152108	RSA 152358	RSA 152408
10	100	300	RSA 152310	RSA 152110	RSA 152360	RSA 152410
12	100	300	RSA 152312	RSA 152112	RSA 152362	RSA 152412
13	100	300	RSA 152313	RSA 152113	RSA 152363	RSA 152413
14	100	300	RSA 152314	RSA 152114	RSA 152364	RSA 152414
15	100	300	RSA 152315	RSA 152115	RSA 152365	RSA 152415
18	100	300	RSA 152318	RSA 152118	RSA 152368	RSA 152418
20	100	300	RSA 152320	RSA 152120	RSA 152370	RSA 152420
25	100	300	RSA 152325	RSA 152125	RSA 152375	RSA 152425
30	100	300	RSA 152330	RSA 152130	RSA 152380	RSA 152430
40	100	300	RSA 152340	RSA 152140	RSA 152390	RSA 152440
50	100	300	RSA 152350	RSA 152150	RSA 152395	RSA 152450

## Internal brushes, cylindrical tube brushes

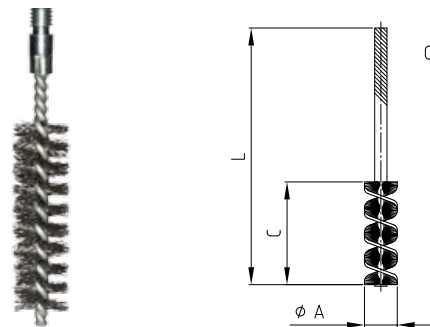
Cylindrical tube brushes with single or double spiral are designed for tube cleaning, deburring, paint stripping, derusting and for the cleaning of condensers and heating tubes.

Internal brushes with double spiral are characterised by an increased wire density resulting in a more aggressive brushing effect.



### Applications:

- ∴ Tube cleaning
- ∴ Deburring
- ∴ Paint stripping
- ∴ Derusting
- ∴ Cleaning



### RSA cylindrical tube brushes, single and double spiral

Outside Ø	Working length	Overall length	Thread	RSA special wire Single spiral	Stainless steel wire Single spiral
mm	mm	mm		Part no.	Part no.
A	C	L	G		
10	100	140	M6	RSA 129010	RSA 129410
12	100	140	M6	RSA 129012	RSA 129412
14	100	140	M6	RSA 129014	RSA 129414
15	100	140	5/16" Ww.	RSA 129015	RSA 129415
18	100	140	5/16" Ww.	RSA 129018	RSA 129418
20	100	140	5/16" Ww.	RSA 129020	RSA 129420
25	100	160	1/2" Ww.	RSA 129225	RSA 129425
28	100	160	1/2" Ww.	RSA 129228	RSA 129428
30	100	160	1/2" Ww.	RSA 129230	RSA 129430
32	100	160	1/2" Ww.	RSA 129232	RSA 129432
38	100	160	1/2" Ww.	RSA 129238	RSA 129438
40	100	160	1/2" Ww.	RSA 129240	RSA 129440
44	100	160	1/2" Ww.	RSA 129244	RSA 129444
50	100	160	1/2" Ww.	RSA 129250	RSA 129450
57	100	160	1/2" Ww.	RSA 129257	RSA 129457
63	100	160	1/2" Ww.	RSA 129263	RSA 129463
69	100	160	1/2" Ww.	RSA 129269	RSA 129469
75	100	160	1/2" Ww.	RSA 129275	RSA 129475

Outside Ø	Working length	Overall length	Thread	RSA special wire Double spiral
mm	mm	mm		Part no.
A	C	L	G	
10	100	140	M6	RSA129000
12	100	140	M6	RSA 129001
14	100	140	M6	RSA 129002
15	100	140	5/16" Ww.	RSA 129003
18	100	140	5/16" Ww.	RSA 129004
20	100	140	5/16" Ww.	RSA 129005
25	100	160	1/2" Ww.	RSA 129025
28	100	160	1/2" Ww.	RSA 129028
30	100	170	1/2" Ww.	RSA 129030
32	100	170	1/2" Ww.	RSA 129032
38	100	170	1/2" Ww.	RSA 129038
40	100	170	1/2" Ww.	RSA 129040
44	100	170	1/2" Ww.	RSA 129044
50	100	170	1/2" Ww.	RSA 129050
57	100	170	1/2" Ww.	RSA 129057
60	100	170	1/2" Ww.	RSA 129060
63	100	170	1/2" Ww.	RSA 129063
69	100	170	1/2" Ww.	RSA 129069
75	100	170	1/2" Ww.	RSA 129075

RSA can supply other dimensions and types of wire on request

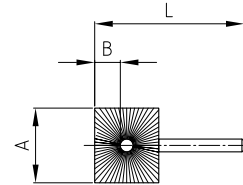
## Sibot Internal brushes, square

In one working process the sides and the base of cylindrical holes are deburred or cleaned.



### Applications:

- ∴ Deburring and cleaning of cylindrical shapes including base, e.g. blind holes



### RSA sibot internal brushes (square shape) - with mounted shank Ø 6 mm

Outside Ø mm	Working length mm	Overall length mm	RSA special wire 0.15 mm Part no.	RSA special wire 0.25 mm Part no.	Corded, brass coated steel wire 0.15 mm Part no.
<b>A</b>	<b>B</b>	<b>L</b>			
25.4	10	83	RSA 118000	RSA 118010	RSA 118011
31.8	13	86	RSA 118020	RSA 118030	RSA 118031
38.1	14	86	RSA 118040	RSA 118050	RSA 118051
44.5	17	89	RSA 118060	RSA 118070	RSA 118071
50.8	18	102	RSA 118090	RSA 118100	RSA 118101

Outside Ø mm	Working length mm	Overall length mm	RASALON grit 120 Part no.	RASALON grit 180 Part no.
<b>A</b>	<b>B</b>	<b>L</b>		
25.4	10	83	RSA 118021	RSA 118022
31.8	13	86	RSA 118032	RSA 118033
38.1	14	86	RSA 118041	RSA 118042
44.5	17	89	RSA 118072	RSA 118073
50.8	18	102	RSA 118091	RSA 118092

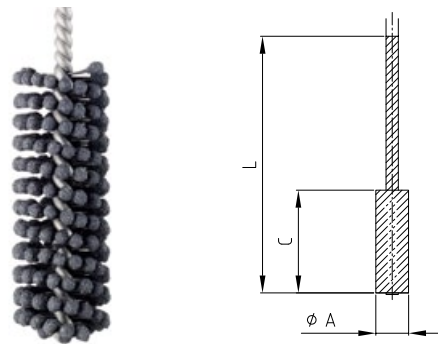
## Internal brushes, honing brushes

Honing brushes are made with special ball filaments with different grit sizes suitable for any application. We produce brush diameters in the required accurate dimensions for various bore sizes. Main applications are in the engine, hydraulics, pneumatics and aerospace industry.



### Applications:

∴ Honing



### RSA honing brushes

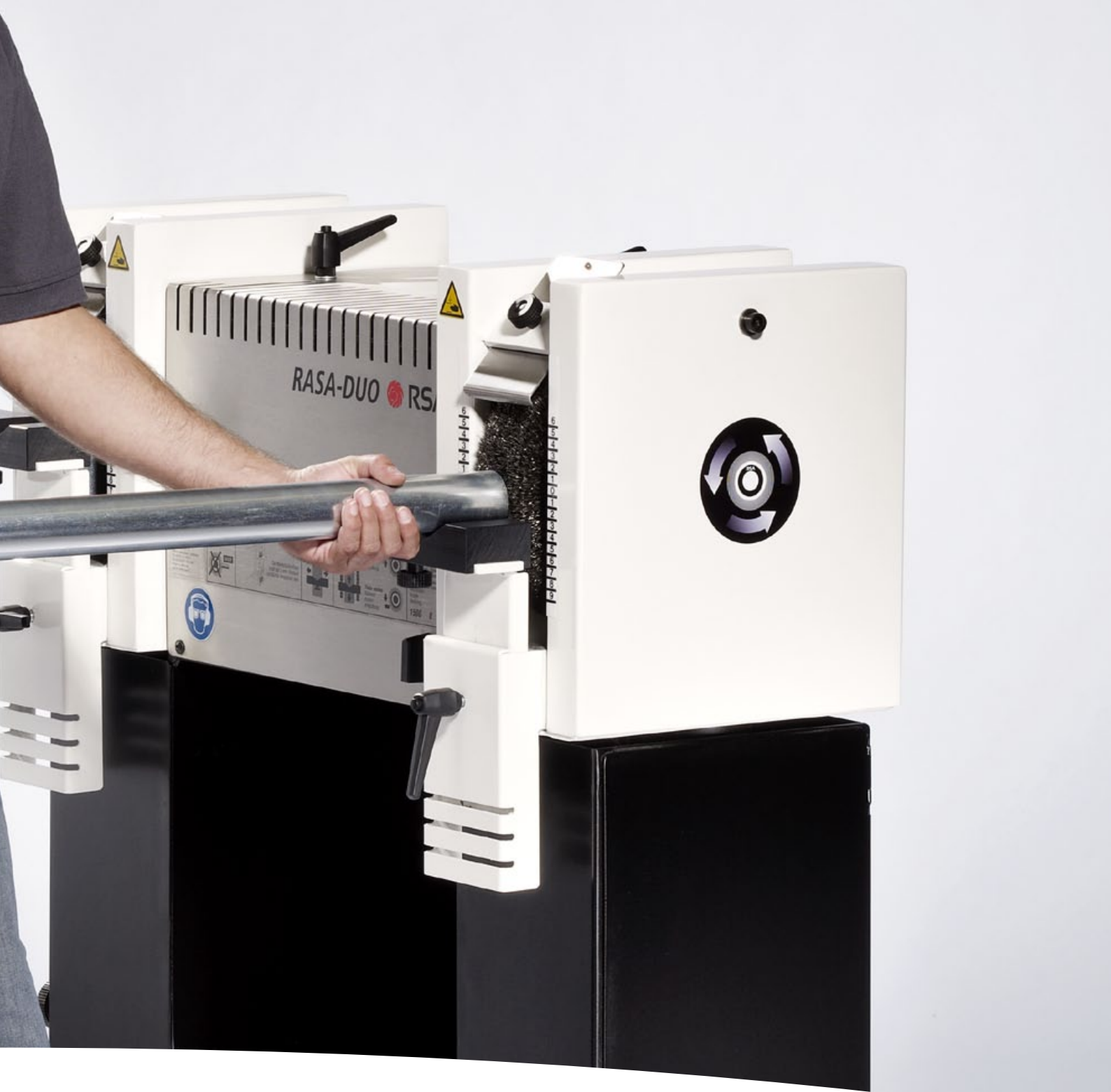
Outside Ø mm	Working length mm	Overall length mm	Grit SIC (Silicon Carbide) 120 Part no.	Grit SIC (Silicon Carbide) 180 Part no.
<b>A</b>	<b>C</b>	<b>L</b>		
9	50	200	RSA 118300	RSA 118350
10	50	200	RSA 118301	RSA 118351
11	60	200	RSA 118302	RSA 118352
12	60	200	RSA 118303	RSA 118353
13	60	200	RSA 118304	RSA 118354
15.5	60	200	RSA 118305	RSA 118355
18	60	200	RSA 118307	RSA 118357
22	70	200	RSA 118308	RSA 118358
25	70	200	RSA 118309	RSA 118359
27	70	200	RSA 118310	RSA 118360
28	70	200	RSA 118311	RSA 118361
30	70	200	RSA 118312	RSA 118362
32	70	200	RSA 118313	RSA 118363
35	70	200	RSA 118314	RSA 118364
38	70	200	RSA 118315	RSA 118365
41	70	200	RSA 118316	RSA 118366
45	70	200	RSA 118317	RSA 118367
48	70	200	RSA 118318	RSA 118368
51	70	200	RSA 118319	RSA 118369
54	70	200	RSA 118320	RSA 118370
57	70	200	RSA 118322	RSA 118372
64	70	200	RSA 118323	RSA 118373

RSA can supply other dimensions and types of wire on request





# Brushes for deburring machines



# Brushes for deburring machines, RASAMAX MONO brushes

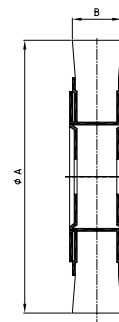
RASAMAX MONO is a stand-alone machine for the deburring edges of handy sized sheet metal with notches and contours. Sheet metal with a thickness of up to 6 mm is rounded off fast and safely, without any secondary burr. The benefits are reproducible deburring results, high output as well as an even rounding off of the edges, free from secondary burr.

RSA offers different brushes for RASAMAX MONO for various applications. Please contact us, when you have special requirements.



## Applications:

- ∴ Deburring of handy sized sheet metal with notches and contours made of stainless steel and non-ferrous metals, suitable for single pieces and small batches



RSA high performance brushes for RSA deburring systems

### RSA RASAMAX MONO / ST

Ø	Working width	RSA special wire 0.20 mm	RSA special wire 0.35 mm	Stainless steel wire 0.20 mm	Stainless steel wire 0.35 mm
mm	mm	Part no.	Part no.	Part no.	Part no.
<b>A</b>	<b>B</b>				
250	15	RSA 2515.20	RSA 2515.35	RSA 2515.VA20	RSA 2515.VA35
250	15	RSA 2515.20KS	RSA 2515.35KS	RSA 2515.VA20KS	RSA 2515.VA35KS

Ø	Working width	RASALON grit 80	RASALON grit 120	RASALON grit 180	RASALON grit 320
mm	mm	Part no.	Part no.	Part no.	Part no.
<b>A</b>	<b>B</b>				
250	15	RSA 2515.080	RSA 2515.120	RSA 2515.180	RSA 2515.320

KS = plastic bonded

RSA can supply other dimensions and types of wire on request



# Brushes for deburring machines, RASAMAX DUO brushes

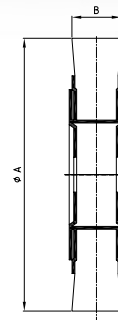
RASAMAX DUO, a stand-alone machine, was developed specifically for the fast and safe deburring of straight sheet metal. Top and bottom edge of the sheet metal are simultaneously deburred in one work process. The benefits are reproducible deburring results, high output as well as an even rounding off of the edges, free from secondary burr. Through the use of plastic bonded high performance brushes straight sheet metal edges can be deburred without damaging the surface.

RSA offers different brushes for RASAMAX DUO for various applications. Please contact us, when you have special requirements.



### Applications:

- ∴ Deburring of straight sheet metal made of steel, stainless steel and non-ferrous metals, suitable for single pieces and small batches



RSA high performance brushes for RSA deburring systems

### RSA RASAMAX DUO

∅	Working width	RSA special wire 0.20 mm	RSA special wire 0.35 mm	Stainless steel wire 0.20 mm	Stainless steel wire 0.35 mm
mm	mm	Part no.	Part no.	Part no.	Part no.
<b>A</b>	<b>B</b>				
250	20	RSA 2520.20	RSA 2520.35	RSA 2520.VA20	RSA 2520.VA35
250	20	RSA 2520.20KS	RSA 2520.35KS	RSA 2520.VA20KS	RSA 2520.VA35KS

∅	Working width	RASALON grit 80	RASALON grit 120	RASALON grit 180	RASALON grit 320
mm	mm	Part no.	Part no.	Part no.	Part no.
<b>A</b>	<b>B</b>				
250	20	RSA 2520.080	RSA 2520.120	RSA 2520.180	RSA 2520.320

KS = plastic bonded

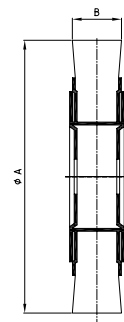
# Brushes for deburring machines, RASAMAX brushes

RASAMAX (manual machine) is designed for the deburring of metal sheet with notches and contours. Sheet metal with a thickness of up to 6 mm is rounded off fast and safely, without any secondary burr. The benefits are reproducible deburring results and an even rounding off of the edges, free from secondary burr.

RSA offers for RASAMAX different brushes for various applications.

## Applications:

∴ Deburring of metal sheet with notches and contours made of steel, stainless steel and non-ferrous metals, suitable for single pieces and small batches.



RSA high performance brushes for RSA deburring systems

### RSA RASAMAX

Ø	Working width	RSA special wire 0.20 mm	RSA special wire 0.35 mm	Stainless steel wire 0.20 mm	Stainless steel wire 0.35 mm
mm	mm	Part no.	Part no.	Part no.	Part no.
<b>A</b>	<b>B</b>				
150	15	RSA 1514.20	RSA 1514.35	RSA 1514.VA20	RSA 1514.VA35
150	15	RSA 1514.20KS	RSA 1514.35KS	RSA 1514.VA20KS	RSA 1514.VA35KS

Ø	Working width	RASALON grit 80
mm	mm	Part no.
<b>A</b>	<b>B</b>	
150	15	RSA 1514.080

KS = plastic bonded

RSA can supply other dimensions and types of wire on request

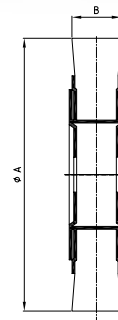
## Brushes for deburring machines, RASA MONO / DUO brushes

For the stand-alone deburring machines RASA MONO and RASA DUO RSA offers brushes for the reliable deburring of end faces and the longitudinal deburring of tubes, hollow sections, sections of solid material and sheet metal. Deburring only takes three seconds to properly remove all burrs on the inner and outer edges. The result: Better quality and less complaints even in the field of surface treatment, e.g. no flaking of paint, chrome or powder coating on the ends of the workpieces due to burrs.



### Applications:

- ∴ Deburring of end and longitudinal faces of tubes, hollow sections, sections of solid material and sheet metal made of steel, stainless steel and non-ferrous metals



RSA high performance brushes for RSA deburring systems  
**RASA-MONO / RASA-DUO / ST / STL**

Ø	Working width	RSA special wire 0.20 mm	RSA special wire 0.35 mm	RSA special wire 0.50 mm	Stainless steel wire 0.20 mm	Stainless steel wire 0.35 mm	Stainless steel wire 0.50 mm
mm	mm	Part no.	Part no.	Part no.	Part no.	Part no.	Part no.
A	B						
250	60	RSA 2506.20	RSA 2506.35	RSA 2506.50	RSA 2506.VA20	RSA 2506.VA35	RSA 2506.VA50

Ø	Working width	Corded, brass coated special wire 0.20 mm	Corded, brass coated special wire 0.27 mm	Corded, brass coated special wire 0.38 mm	Corded stainless special steel wire 0.20 mm	Corded stainless special steel wire 0.35 mm
mm	mm	Part no.	Part no.	Part no.	Part no.	Part no.
A	B					
250	60	RSA 2506.S20	RSA 2506.S27	RSA 2506.S38	RSA 2506.ES20	RSA 2506.ES35

Ø	Working width	RASALON grit 80	RASALON grit 120	RASALON grit 180	RASALON grit 320	RASALON grit 500
mm	mm	Part no.	Part no.	Part no.	Part no.	Part no.
A	B					
250	60	RSA 2506.080	RSA 2506.120	RSA 2506.180	RSA 2506.320	RSA 2506.500

RSA can supply other dimensions and types of wire on request

# Brushes for deburring machines, TURNAMAT brushes

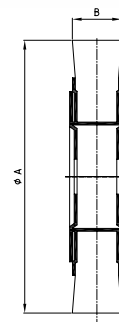
TURNAMAT is the economical solution for the deburring of bent tubes, complex section shapes and heavy workpieces or workpieces with heavy burrs. The extremely robust machines simultaneously deburr the inner and outer edges.

RSA offers for the deburring machine system TURNAMAT various circular brushes for the deburring of tubes and sections. The benefits of these high performance brushes are reproducible results, a high output performance and safe operation.



## Applications:

∴ Deburring of bent, heavy tubes and complex section shapes made of steel, stainless steel, aluminium and other non-ferrous metals



RSA high performance brushes for RSA deburring systems

### RSA TURNAMAT

Ø	Working width	RSA special wire 0.20 mm	RSA special wire 0.35 mm	RSA special wire 0.50 mm
mm	mm	Part no.	Part no.	Part no.
A	B			
250	60	RSA 82506.20	RSA 82506.35	RSA 82506.50
250	80	RSA 82508.20	RSA 82508.35	RSA 82508.50
250	100	RSA 82510.20	RSA 82510.35	RSA 82510.50

Ø	Working width	Corded, brass coated special wire 0.38 mm	Corded, stainless steel wire 0.35 mm
mm	mm	Part no.	Part no.
A	B		
250	60	RSA 82506.S38	RSA 82506.ES35
250	80	RSA 82508.S38	RSA 82508.ES35
250	100	RSA 82510.S38	RSA 82510.ES35

Ø	Working width	Stainless steel wire VA 0.20 mm	Stainless steel wire VA 0.35 mm	Stainless steel wire VA 0.50 mm
mm	mm	Part no.	Part no.	Part no.
A	B			
250	60	RSA 82506.VA20	RSA 82506.VA35	RSA 82506.VA50
250	80	RSA 82508.VA20	RSA 82508.VA35	RSA 82508.VA50
250	100	RSA 82510.VA20	RSA 82510.VA35	RSA 82510.VA50

RSA can supply other dimensions and types of wire on request

# Brushes for deburring machines, RASAMAT segments

The RASAMAT system was developed by RSA as a stand-alone machine for the deburring of complex section shapes. Every cut edge is properly deburred inside and outside in one single operation.

The outer surface of the workpiece is not affected. In this way even surface-treated sections can be deburred. The type of wire is selected according to the deburring task. This leads to an optimum deburring result, a longer working life of the tool and a very short deburring time.



## Applications:

- ∴ Deburring of complex section shapes



RSA high performance brushes for RSA deburring systems

### RSA brush segments for RASAMAT® and RASAMAT® Automat

Outside Ø	Overall length	RSA special wire 0.20 mm	RSA special wire 0.35 mm	RSA special wire 0.50 mm	Stainless steel wire 0.20 mm	Stainless steel wire 0.35 mm	Stainless steel wire 0.50 mm
mm	mm	Part no.	Part no.	Part no.	Part no.	Part no.	Part no.
<b>A</b>	<b>L</b>						
25	120	RSA 11525.02016	RSA 11525.03516	RSA 11525.05016	RSA 11525.VA02016	RSA 11525.VA03516	RSA 11525.VA05016

Outside Ø	Overall length	RASALON grit 80	RASALON grit 120	RASALON grit 180	Mixed material* 0.20 mm/grit 180	Mixed material* 0.20 mm/grit 120	Mixed material* 0.20 mm/grit 120
mm	mm	Part no.	Part no.	Part no.	Part no.	Part no.	Part no.
<b>A</b>	<b>L</b>						
25	120	RSA 11525.08016	RSA 11525.12016	RSA 11525.18016	RSA 11525.MB116	RSA 11525.MB216	RSA 11525.MB316

RASAMAT head = 8-head - 1 set = 8 segments

RASAMAT head = 16-head - 1 set = 16 segments

RASAMAT head = 24-head - 1 set = 24 segments

\* Mixed material: Trimming of stainless steel wire and RASALON

**Why RASAMAT tools are superior to circular brushes:** Circular brushes are the firmly established tools for the deburring of steel tubes and sections. However, they are totally unsuitable for the processing of aluminium extrusions. If the workpiece has inside fins, the circular brush is not able to reach the outer surfaces - deburring is not 100%. The same applies to hollow sections that cannot be deburred with circular brushes either. They damage the delicate surfaces, because the brush wire impacts the outside edges.

#### The benefit of the RASAMAT tool:

All contours of the sections are reached without damaging the surfaces.

**Why RASAMAT tools are superior to surface brushes:** On surface brushes, brush wires are pushed outwards due to centrifugal force and are bulging in the course of use. In this way they provide no or only incomplete deburring performance.

#### The benefits of the RASAMAT tool:

Absolutely even deburring during the whole working life of the tool, longer life-time and in this way reduced tool costs.

# Brushes for deburring machines, RASAPLAN roller brushes

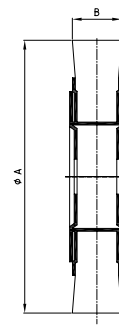
RSA RASAPLAN are tube deburring systems with which tubes are automatically deburred simultaneously on both end faces inside and outside in continuous operation.

RSA offers high quality roller brushes for these deburring machines. The roller brushes are characterised by a 100 % true running and an extremely long working life. The result: Better quality and lower costs.



## Applications:

∴ Deburring of the end faces of tubes, sections and solid material made of steel, stainless steel and non-ferrous metals



RSA automatic deburring machines

### RSA RASAPLAN NN / NN-C / NN-S / NC-V / NK-V / XY

Ø	Working width		RSA special wire	RSA special wire	RSA special wire
	mm	mm	0.20 mm	0.35 mm	0.50 mm
			Part no.	Part no.	Part no.
<b>A</b>	<b>B</b>				
250	300	NN-C / NC-V	RSA 2530-2010/E	RSA 2530-3510/E	RSA 2530-5010/E
300	460	NN / NK-V / NN-S / XY	RSA 3046-2012/E	RSA 3046-3512/E	RSA 3046-5012/E

Ø	Working width		Stainless steel wire	Stainless steel wire	Stainless steel wire
	mm	mm	0.20 mm	0.35 mm	0.50 mm
			Part no.	Part no.	Part no.
<b>A</b>	<b>B</b>				
250	300	NN-C / NC-V	RSA 2530-VA2010	RSA 2530-VA3510	RSA 2530-VA5010
300	460	NN / NK-V / NN-S / XY	RSA 3046-VA2012	RSA 3046-VA3512	RSA 3046-VA5012

Ø	Working width		Corded, brass coated special wire	Corded, stainless steel wire
	mm	mm	0.38 mm	0.35 mm
			Part no.	Part no.
<b>A</b>	<b>B</b>			
250	300	NN-C / NC-V	RSA 2530-S3810	RSA 2530-ES3510
300	460	NN / NK-V / NN-S / XY	RSA 3046-S3812	RSA 3046-ES3512

Ø	Working width		RASALON	Holding down brushes
	mm	mm	grit 80	
			Part no.	Part no.
<b>A</b>	<b>B</b>			
250	300	NN-C / NC-V	RSA 2530-K8010	RSA 94-20-1
300	460	NN / NK-V / NN-S / XY	RSA 3046-K8012	RSA 94-20

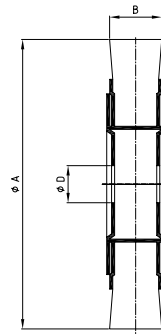
RSA can supply other dimensions and types of wire on request

# Brushes for deburring machines, roller brushes

RSA offers high quality roller brushes for all automatic deburring machines of different manufacturers e.g. of BEWO, Rattunde, Adige, WRT, Spontan, Pedrazzoli, Conni, Burrmaster. The roller brushes are characterised by 100 % true running and an extremely long working life. The result: Better quality and less costs.

## Applications:

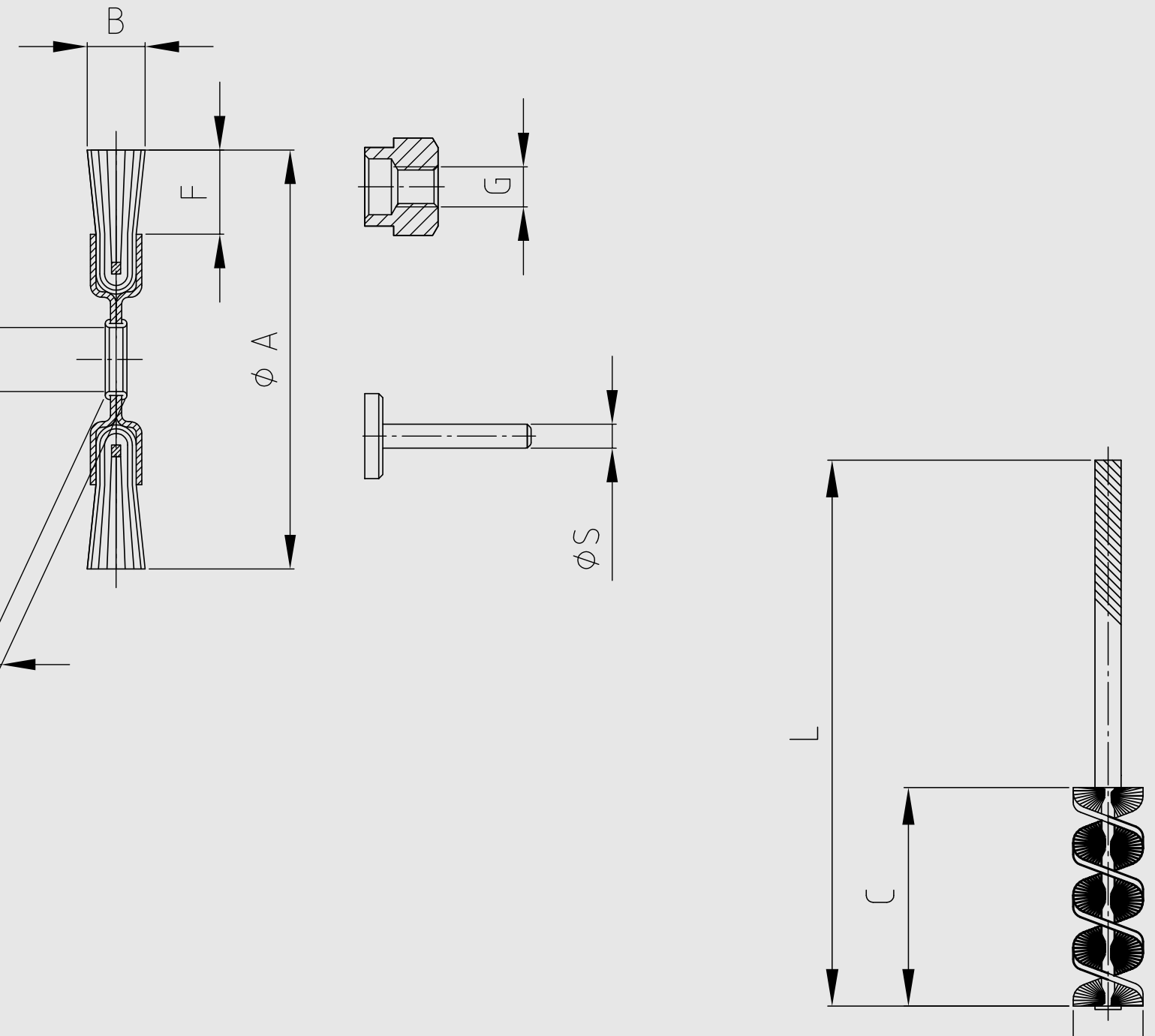
∴ Deburring of end faces on tubes, sections and solid material made of steel, stainless steel and non-ferrous metals



## RSA roller brushes for tube deburring machines

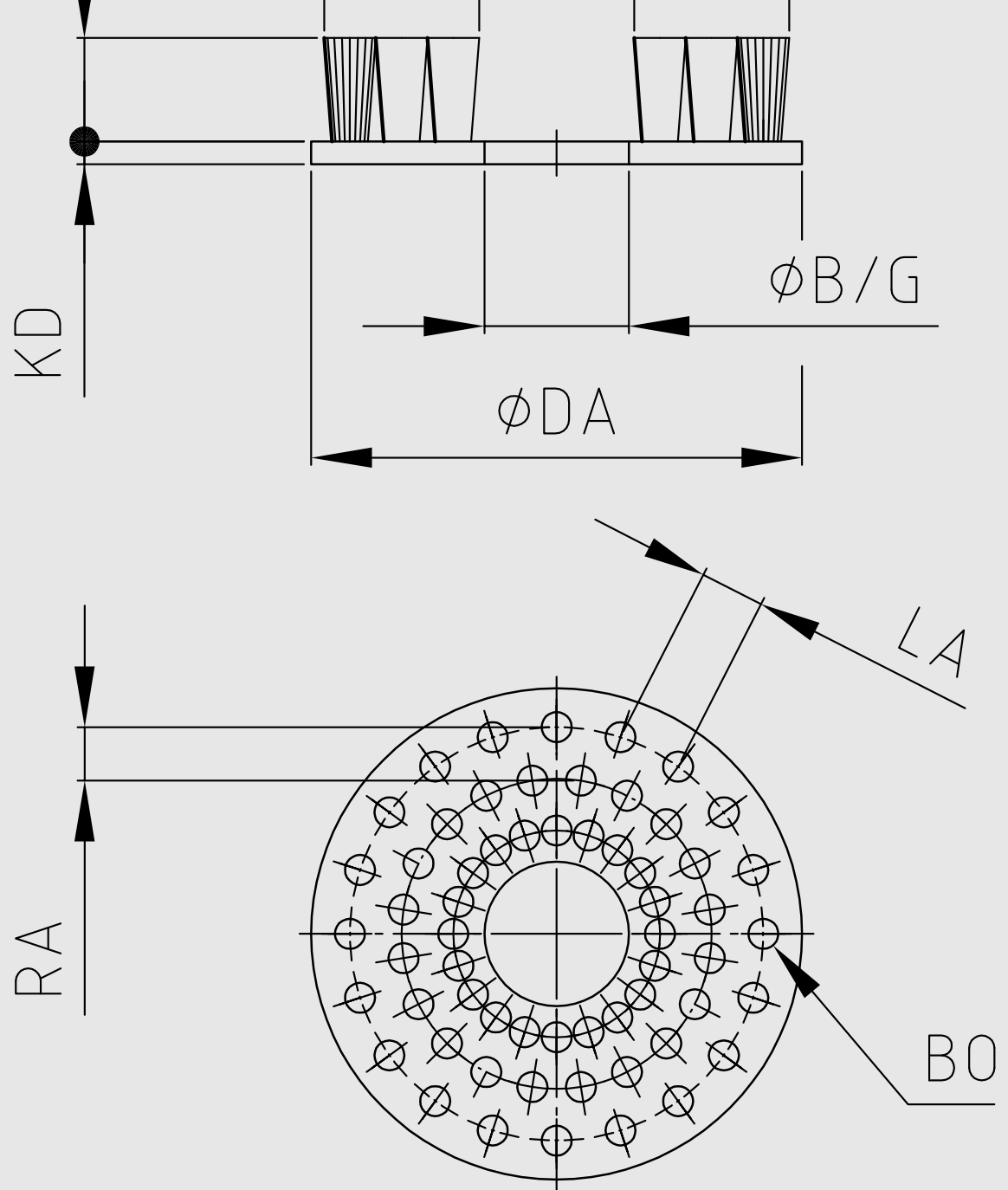
$\varnothing$	Working width	Basic bore	RSA special wire 0.20 mm	RSA special wire 0.35 mm	RSA special wire 0.50 mm
mm	mm	mm	Part no.	Part no.	Part no.
A	B	D			
250	460	100	RSA 2546-2010	RSA 2546-3510	RSA 2546-5010
300	460	120	RSA 3046-2012	RSA 3046-3512	RSA 3046-5012
300	600	120	RSA 3060-2012	RSA 3060-3512	RSA 3060-5012

$\varnothing$	Working width	Basic bore	Stainless steel wire 0.20 mm	Stainless steel wire 0.35 mm	Stainless steel wire 0.50 mm
mm	mm	mm	Part no.	Part no.	Part no.
A	B	D			
250	460	100	RSA 2546-VA2010	RSA 2546-VA3510	RSA 2546-VA5010
300	460	120	RSA 3046-VA2012	RSA 3046-VA3512	RSA 3046-VA5012
300	600	120	RSA 3060-VA2012	RSA 3060-VA3512	RSA 3060-VA5012



## Brushes with special dimensions: **Inquiry forms**





## Brushes with special dimensions

There are applications where a standard brush is not enough. This is why we can supply you with exactly the specification you need. The manufacture of customer-specific special brushes has a long tradition here at RSA.

### We offer you the following brush types in customised versions:

- ∴ Wheel brushes
- ∴ Cup brushes
- ∴ End brushes
- ∴ Internal brushes
- ∴ Plate brushes
- ∴ Lag brushes
- ∴ Strip brushes

For your personal brush configuration we have prepared inquiry forms for you on the following pages.



# Inquiry form wheel brush



**RSA cutting systems GmbH**  
 Adolph-Kolping-Straße 14  
 58239 Schwerte · GERMANY  
 Fax: +49 (0)2304 9111-100  
 rsa.d@rsa.de

**RSA cutting systems Ltd.**  
 Unit 1 Tweedale Court  
 Tweedale North Industrial Est.  
 TF74JZ Telford Shropshire · GREAT BRITAIN  
 Fax: +44 (0)19 525 805 11  
 rsa.gb@rsa.de

\_\_\_\_\_  
 Company

\_\_\_\_\_  
 Last name

\_\_\_\_\_  
 First name

\_\_\_\_\_  
 Street

\_\_\_\_\_  
 Postal code, city

\_\_\_\_\_  
 Telephone / fax

\_\_\_\_\_  
 E-mail address

## General

Requested quantity \_\_\_\_\_ Number of pieces \_\_\_\_\_

## Dimensions

Outside Ø (A) \_\_\_\_\_ mm

Material length (C) \_\_\_\_\_ mm

Working width (B) \_\_\_\_\_ mm

Bore (D)  Shaft (S)  Thread (G)  \_\_\_\_\_ mm

Keyway  Yes  No

Clamping width (EB) \_\_\_\_\_ mm

## Type

Crimped

Knotted

Plastic bonded

## Material

RSA steel wire

Stainless steel wire

RASALON

Other

Material thickness \_\_\_\_\_ mm

Grit size \_\_\_\_\_

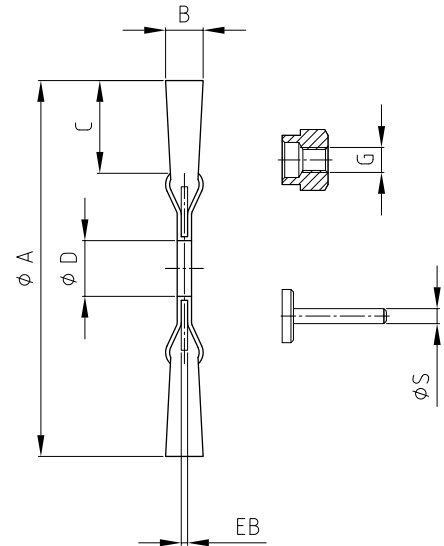
## Conditions of use

Rotation speed \_\_\_\_\_ rpm

Drive:  
 Angle grinder  Drilling machine  Straight grinder  Grinder bench   
 Special machines  Processing Center  Other

Work environment:  
 Water  Oil  Acids  Alkaline solutions

Description of the workpiece \_\_\_\_\_



### Special features:

\_\_\_\_\_

\_\_\_\_\_

\_\_\_\_\_

\_\_\_\_\_

\_\_\_\_\_

\_\_\_\_\_

\_\_\_\_\_

\_\_\_\_\_

\_\_\_\_\_

### Sketch:

# Inquiry form cup brush



**RSA cutting systems GmbH**  
 Adolph-Kolping-Straße 14  
 58239 Schwerte · GERMANY  
 Fax: +49 (0)2304 9111-100  
 rsa.d@rsa.de

**RSA cutting systems Ltd.**  
 Unit 1 Tweedale Court  
 Tweedale North Industrial Est.  
 TF74JZ Telford Shropshire · GREAT BRITAIN  
 Fax: +44 (0)19 525 805 11  
 rsa.gb@rsa.de

\_\_\_\_\_  
 Company

\_\_\_\_\_  
 Last name

\_\_\_\_\_  
 First name

\_\_\_\_\_  
 Street

\_\_\_\_\_  
 Postal code, city

\_\_\_\_\_  
 Telephone / fax

\_\_\_\_\_  
 E-mail address

## General

Requested quantity \_\_\_\_\_ Number of pieces \_\_\_\_\_

## Dimensions

Outside Ø (A) \_\_\_\_\_ mm

Material length (C) \_\_\_\_\_ mm

Bore (B)  Shaft (S)  Thread (G)  \_\_\_\_\_ mm

## Type

Crimped

Knotted

Plastic bonded

## Material

RSA steel wire

Stainless steel wire

RASALON

Other

Material thickness \_\_\_\_\_ mm

Grit size \_\_\_\_\_

## Conditions of use

Rotation speed \_\_\_\_\_ rpm

Drive:  
 Angle grinder  Drilling machine  Straight grinder   
 Special machine

Work environment:  
 Water  Oil  Acids  Alkaline solutions

Description of the workpiece

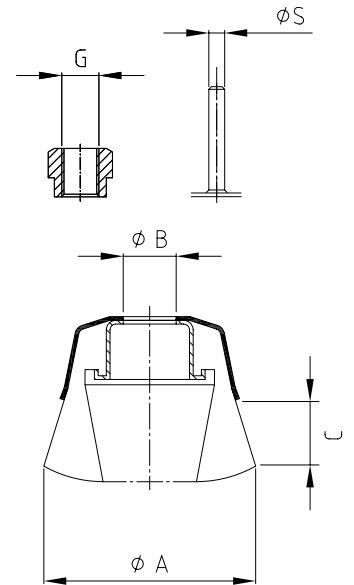
\_\_\_\_\_

\_\_\_\_\_

\_\_\_\_\_

\_\_\_\_\_

\_\_\_\_\_



**Special features:**

\_\_\_\_\_

\_\_\_\_\_

\_\_\_\_\_

\_\_\_\_\_

\_\_\_\_\_

\_\_\_\_\_

\_\_\_\_\_

\_\_\_\_\_

**Sketch:**

# Inquiry form end brush



**RSA cutting systems GmbH**  
 Adolph-Kolping-Straße 14  
 58239 Schwerte · GERMANY  
 Fax: +49 (0)2304 9111-100  
 rsa.d@rsa.de

**RSA cutting systems Ltd.**  
 Unit 1 Tweedale Court  
 Tweedale North Industrial Est.  
 TF74JZ Telford Shropshire · GREAT BRITAIN  
 Fax: +44 (0)19 525 805 11  
 rsa.gb@rsa.de

\_\_\_\_\_  
 Company

\_\_\_\_\_  
 Last name

\_\_\_\_\_  
 First name

\_\_\_\_\_  
 Street

\_\_\_\_\_  
 Postal code, city

\_\_\_\_\_  
 Telephone / fax

\_\_\_\_\_  
 E-mail address

## General

Requested quantity \_\_\_\_\_ Number of pieces \_\_\_\_\_

## Dimensions

Outside Ø (A) \_\_\_\_\_ mm

Material height / length (C) \_\_\_\_\_ mm

Body length, incl. shaft (E) \_\_\_\_\_ mm

Body diameter (K) \_\_\_\_\_ mm

## Type

Crimped

Knotted

Plastic bonded

## Material

RSA steel wire

Stainless steel wire

RASALON

Other

Material thickness \_\_\_\_\_ mm

Grit size \_\_\_\_\_

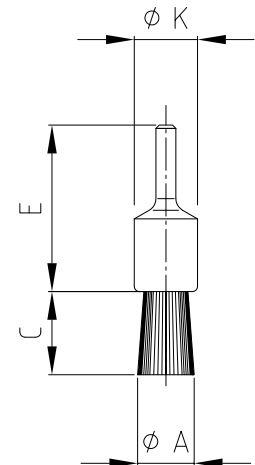
## Conditions of use

Rotation speed \_\_\_\_\_ rpm

Drive:  
 Drilling machine  Straight grinder  Special machine

Work environment:  
 Water  Oil  Acids  Alkaline solutions

Description of the workpiece  
 \_\_\_\_\_  
 \_\_\_\_\_  
 \_\_\_\_\_  
 \_\_\_\_\_



**Special features:**

\_\_\_\_\_  
 \_\_\_\_\_  
 \_\_\_\_\_  
 \_\_\_\_\_  
 \_\_\_\_\_  
 \_\_\_\_\_  
 \_\_\_\_\_

**Sketch:**

# Inquiry form internal brush



**RSA cutting systems GmbH**  
 Adolph-Kolping-Straße 14  
 58239 Schwerte · GERMANY  
 Fax: +49 (0)2304 9111-100  
 rsa.d@rsa.de

**RSA cutting systems Ltd.**  
 Unit 1 Tweedale Court  
 Tweedale North Industrial Est.  
 TF74JZ Telford Shropshire · GREAT BRITAIN  
 Fax: +44 (0)19 525 805 11  
 rsa.gb@rsa.de

\_\_\_\_\_  
 Company

\_\_\_\_\_  
 Last name

\_\_\_\_\_  
 First name

\_\_\_\_\_  
 Street

\_\_\_\_\_  
 Postal code, city

\_\_\_\_\_  
 Telephone / fax

\_\_\_\_\_  
 E-mail address

**General**

Requested quantity \_\_\_\_\_ Number of pieces \_\_\_\_\_

**Dimensions**

Outside Ø (A) \_\_\_\_\_ mm

Overall length (L) \_\_\_\_\_ mm

Working length (B) \_\_\_\_\_ mm

**Material**

RSA steel wire

Stainless steel wire

Plastic bonded

RASALON

Other

Material thickness \_\_\_\_\_ mm

Grit size \_\_\_\_\_

**Conditions of use**

Rotation speed \_\_\_\_\_ rpm

Drive:  
 Drilling machine  Straight grinder  Special machine

Work environment:  
 Water  Oil  Acids  Alkaline solutions

Description of the workpiece

\_\_\_\_\_

\_\_\_\_\_

\_\_\_\_\_

\_\_\_\_\_

\_\_\_\_\_

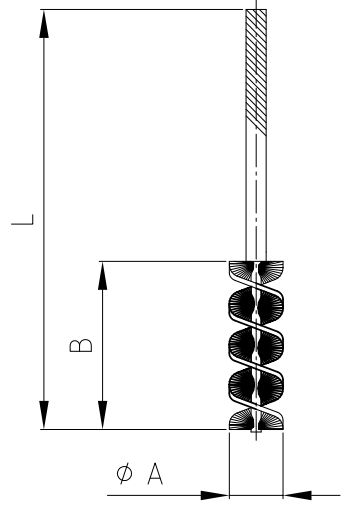
\_\_\_\_\_

\_\_\_\_\_

\_\_\_\_\_

\_\_\_\_\_

\_\_\_\_\_



**Special features:**

\_\_\_\_\_

\_\_\_\_\_

\_\_\_\_\_

\_\_\_\_\_

\_\_\_\_\_

\_\_\_\_\_

\_\_\_\_\_

\_\_\_\_\_

\_\_\_\_\_

**Sketch:**

# Inquiry form plate brush



**RSA cutting systems GmbH**  
 Adolph-Kolping-Straße 14  
 58239 Schwerte · GERMANY  
 Fax: +49 (0)2304 9111-100  
 rsa.d@rsa.de

**RSA cutting systems Ltd.**  
 Unit 1 Tweedale Court  
 Tweedale North Industrial Est.  
 TF74JZ Telford Shropshire · GREAT BRITAIN  
 Fax: +44 (0)19 525 805 11  
 rsa.gb@rsa.de

Company \_\_\_\_\_

Last name \_\_\_\_\_

First name \_\_\_\_\_

Street \_\_\_\_\_

Postal code, city \_\_\_\_\_

Telephone / fax \_\_\_\_\_

E-mail address \_\_\_\_\_

## General

Requested quantity \_\_\_\_\_ Number of pieces \_\_\_\_\_

## Dimensions

Body diameter (DA) \_\_\_\_\_ mm

Bore / thread (B/G) \_\_\_\_\_ mm

Thickness of body (KD) \_\_\_\_\_ mm

Material height (BH) \_\_\_\_\_ mm

Material Ø outside (D1) \_\_\_\_\_ inside (D2) \_\_\_\_\_ mm

Row spacing (RA) \_\_\_\_\_ mm

Hole spacing (LA) \_\_\_\_\_ mm

Bundle bore (BO) \_\_\_\_\_ mm

## Material

RSA steel wire

Steel wire brassed

Brass

Stainless steel

PP  PA  PES

RASALON silicon carbide

RASALON aluminium oxide

Fibre

Horsehair

## Body material

PP  PA  PES

Wood

Steel

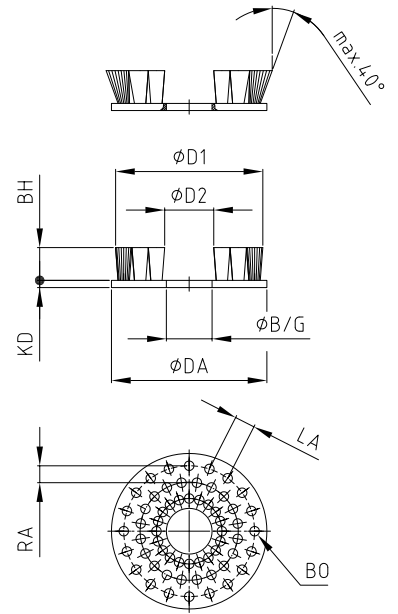
Aluminium

## Conditions of use

Rotation speed \_\_\_\_\_ rpm

\_\_\_\_\_

\_\_\_\_\_



Drive:

Angle grinder  Drilling machine  Straight grinder

Special machine  Other

Work environment:

Water  Oil  Acids  Alkaline solutions

Description of the workpiece \_\_\_\_\_

Special features: \_\_\_\_\_

Sketch:

# Inquiry form strip brush



# RSA

The Power of Perfection

**RSA cutting systems GmbH**

Adolph-Kolping-Straße 14  
58239 Schwerte · GERMANY  
Fax: +49 (0)2304 9111-100  
rsa.d@rsa.de

**RSA cutting systems Ltd.**

Unit 1 Tweedale Court  
Tweedale North Industrial Est.  
TF74JZ Telford Shropshire · GREAT BRITAIN  
Fax: +44 (0)19 525 805 11  
rsa.gb@rsa.de

Company \_\_\_\_\_

Last name \_\_\_\_\_

First name \_\_\_\_\_

Street \_\_\_\_\_

Postal code, city \_\_\_\_\_

Telephone / fax \_\_\_\_\_

E-mail address \_\_\_\_\_

### General

Requested quantity \_\_\_\_\_ Number of pieces \_\_\_\_\_

### Dimensions

Width of the back (RB) \_\_\_\_\_ mm

Overall height without mounting (GH) \_\_\_\_\_ mm

Material height (BH) \_\_\_\_\_ mm

Shape of mounting:  H  F

### Material

RSA steel wire

Brass

Stainless steel

PP  PA  PES

RASALON silicon carbide

RASALON aluminium oxide

Fibre

Horsehair

### Body material

Stainless steel

Steel

### Conditions of use

Work environment:  
Water  Oil  Acids  Alkaline solutions

Description of the workpiece \_\_\_\_\_

\_\_\_\_\_

\_\_\_\_\_

\_\_\_\_\_

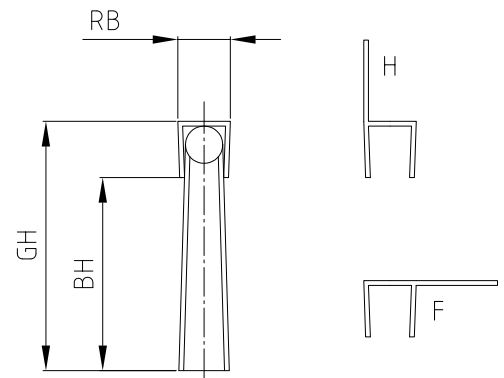
\_\_\_\_\_

\_\_\_\_\_

\_\_\_\_\_

\_\_\_\_\_

\_\_\_\_\_



**Special features:** \_\_\_\_\_

\_\_\_\_\_

\_\_\_\_\_

\_\_\_\_\_

\_\_\_\_\_

\_\_\_\_\_

\_\_\_\_\_

\_\_\_\_\_

\_\_\_\_\_

**Sketch:**



# Inquiry form lag brush



**RSA cutting systems GmbH**  
 Adolph-Kolping-Straße 14  
 58239 Schwerte · GERMANY  
 Fax: +49 (0)2304 9111-100  
 rsa.d@rsa.de

**RSA cutting systems Ltd.**  
 Unit 1 Tweedale Court  
 Tweedale North Industrial Est.  
 TF74JZ Telford Shropshire · GREAT BRITAIN  
 Fax: +44 (0)19 525 805 11  
 rsa.gb@rsa.de

\_\_\_\_\_  
 Company

\_\_\_\_\_  
 Last name

\_\_\_\_\_  
 First name

\_\_\_\_\_  
 Street

\_\_\_\_\_  
 Postal code, city

\_\_\_\_\_  
 Telephone / fax

\_\_\_\_\_  
 E-mail address

**General**

Requested quantity \_\_\_\_\_ Number of pieces \_\_\_\_\_

**Dimensions**

Overall length (GL) \_\_\_\_\_ mm

Overall width (KB) \_\_\_\_\_ mm

Thickness of body (KD) \_\_\_\_\_ mm

Material height (BH) \_\_\_\_\_ mm

Material length (BL) \_\_\_\_\_ mm

Material width (BB) \_\_\_\_\_ mm

Row spacing (RA) \_\_\_\_\_ mm

Hole spacing (LA) \_\_\_\_\_ mm

Bundle bore (BO) \_\_\_\_\_ mm

**Material**

RSA steel wire

Steel brass coated

Brass

Stainless steel

PP  PA  PES

RASALON silicon carbide

RASALON aluminium oxide

Fibre

Horsehair

**Body material**

PP  PA  PES

Wood

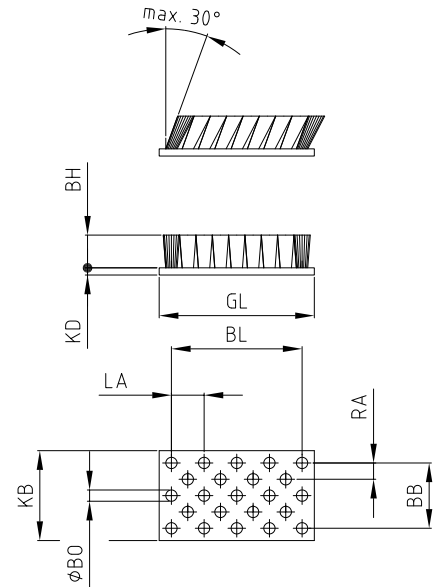
Steel

Aluminium

\_\_\_\_\_

\_\_\_\_\_

\_\_\_\_\_



**Conditions of use**

Work environment:  
 Water  Oil  Acids  Alkaline solutions

Description of the workpiece \_\_\_\_\_

**Special features:**

\_\_\_\_\_

\_\_\_\_\_

\_\_\_\_\_

\_\_\_\_\_

**Sketch:**

# RSA cutting systems GmbH

With our divisions for sawing centres, saw blades, deburring systems, and brushes we provide professional and economical system solutions for your production. And that internationally. As a system supplier for many years for various industries, we are involved in the entire process chain: from the development and prototyping to the production of an optimal tool with a worldwide service. Our main focus is always on your success, whether quality is concerned or costs. Because our products have only one objective: to provide you with a competitive advantage.

You can rely on products from RSA, because we manufacture not only sawing centres and deburring systems, but also brushes and saw blades. This comprehensive know-how is in all our products. Because what's the use of the best machine without the right tool? Or vice versa?

## Call-off service

On request we can keep an agreed stock level tailored to your requirements of high performance brushes and saw blades needed for your production. These can be drawn off as required meaning a fast and reliable supply – at any time in the same quality as usual.

## Test us!

Nothing is more convincing than a practical test. Whether our brushes and deburring systems are suitable for your workpieces, you are welcome to test it - free of charge and without obligation. Not only here in Schwerte, but directly on your premises.

We have developed our own dedicated specialist vehicle that is equipped with brushes and deburring systems which you can test on-site with your workpieces.

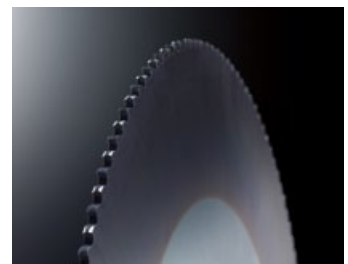
Make an appointment now with our application experts.

Alternatively, just send us your sample pieces which will be processed and returned to you with a documentation of the results.

For more information about our products, please visit [www.rsa.de](http://www.rsa.de).



**Sawing centers**



**Saw blades**



**Deburring systems**



**Brushes**



[www.rsa.de](http://www.rsa.de)

[www.rsacuttingsystems.co.uk](http://www.rsacuttingsystems.co.uk)

**RSA cutting systems GmbH**

Adolph-Kolping-Straße 14  
58239 Schwerte  
GERMANY  
Phone: +49 (0)2304 9111-0  
Fax: +49 (0)2304 9111-100  
E-Mail: [rsa.d@rsa.de](mailto:rsa.d@rsa.de)

**RSA cutting systems Ltd.**

Unit 1 Tweedale Court  
Tweedale North Industrial Est.  
TF74JZ Telford Shropshire  
GREAT BRITAIN  
Phone.: +44 (0)19 525 851 83  
Fax: +44 (0)19 525 805 11  
E-Mail: [rsa.gb@rsa.de](mailto:rsa.gb@rsa.de)

**RSA cutting systems S.à.r.l.**

4, Rue Croix  
57350 Stiring-Wendel  
FRANCE  
Phone.: +33 (0)354 81 81 81  
Fax: +33 (0)354 81 81 82  
E-Mail: [rsa.f@rsa.de](mailto:rsa.f@rsa.de)



**RSA**

The Power of Perfection